



# LANDS' END SCHOOL

St. Mary of the Hills School  
250 Brook Rd  
Milton, MA 02186  
Preferred School Number: 900125816

# Welcome to Lands' End School!

## Guaranteed. Period.®

If you're not satisfied with any item, return it to us at any time for an exchange or refund of its purchase price.

## Pass-along quality.

We're serious about comfort, construction and durability. So our products hold up from the first day of school to the last. (And through the next kid in line.)

Shop by dress code online. Preferred Schools can view their dress code online to make ordering even easier.

## 3% cash back.

Preferred Schools earn 3% cash back on all uniform purchases. It's easy and free to sign up – visit [landsend.com/school](http://landsend.com/school)

## Sizes for grades pre-K to 12.

We offer a great selection of Slim, Plus and Husky sizes for boys and girls.



1-800-469-2222

[landsend.com/school](http://landsend.com/school)

LANDS' END SCHOOL

All prices in U.S. dollars. Prices subject to change.  
©Copyright 2009, Lands' End, Inc. All rights reserved.



## LOGO # 0830328K, School name with graphic, \$5.50

- May be applied to any Lands' End item that can be embroidered but only the items listed in your Dress Code are approved for school use
- Personalized monograms are not allowed with this logo
- Logo and fabric shown are for display purposes only
- Actual embroidery thread colors may vary



*St. Mary of the Hills School*

## LOGO # 0853480K, St Mary of the Hills-For Caps/Hats, \$5.50

- Your school has provided this logo and set certain restrictions regarding its use. It may only be applied to caps/hats
- Personalized monograms are not allowed with this logo



### Short Sleeve Solid Performance Interlock Polo



**Approved colors:**

chambray blue, classic navy

**Grades 1-5 chambray blue**

**Grades 6-8 classic navy**

**Logo 0830328K is mandatory**

**Prices include logo**

|            |                |         |
|------------|----------------|---------|
| 051377-BQ8 | LITTLE Kid S-L | \$21.00 |
| 051402-BQ2 | Kid S-XL       | \$21.00 |
| 313701-BQ3 | MEN S-XL       | \$30.50 |

- Soft, 100% cotton interlock
- Won't shrink out of fit
- Won't pill or fade, wash after wash
- Stains wash out easier

### Long Sleeve Solid Performance Interlock Polo



**Approved colors:**

chambray blue, classic navy

**Grades 1-5 chambray blue**

**Grades 6-8 classic navy**

**Logo 0830328K is mandatory**

**Prices include logo**

|            |                |         |
|------------|----------------|---------|
| 051356-BQ6 | LITTLE Kid S-L | \$23.00 |
| 051369-BQ3 | Kid S-XL       | \$23.00 |
| 313700-BQ9 | MEN S-XL       | \$30.50 |

- Soft, 100% cotton interlock
- Won't shrink out of fit
- Won't pill or fade, wash after wash
- Stains wash out easier

### Drifter Zip Cardigan



**Approved colors:**

classic navy

**Grades 1-5**

**Logo 0830328K is mandatory**

**Prices include logo**

|            |                |         |
|------------|----------------|---------|
| 223021-BQ3 | LITTLE Kid S-L | \$40.50 |
| 223023-BQ2 | Kid S-XL       | \$40.50 |
| 223025-BQ1 | MEN S-XXL      | \$45.00 |

- Soft-as-can-be 100% cotton for all-day comfort
- Knit to eliminate excess bulk under the arms
- Full-zip front with easy grosgrain zipper pull



### Drifter V-neck Sweater



**Approved colors:**

classic navy

**Grades 6-8**

**Logo 0830328K is mandatory**

**Prices include logo**

|            |                |         |
|------------|----------------|---------|
| 223008-BQ8 | LITTLE Kid S-L | \$35.00 |
| 223010-BQ5 | Kids S-XL      | \$35.00 |
| 223013-BQ9 | MEN S-XL       | \$40.50 |

- Soft-as-can-be 100% cotton for all-day comfort
- Bulk-free fit under the arms
- V-neck makes it perfect for layering
- Shape-keeping rib-knit cuffs and hem

### Plain Front Chino Pants



**Approved colors:**

classic navy, khaki

**Grades 1-5 classic navy**

**Grades 6-8 khaki**

**Logo is not allowed**

|            |                           |         |
|------------|---------------------------|---------|
| 191125-BQ8 | LITTLE BOY 4-7            | \$25.50 |
| 191126-BQ2 | LITTLE BOY SLIM 4-7       | \$25.50 |
| 191127-BQ7 | BOY 8-20                  | \$25.50 |
| 191128-BQ1 | BOY SLIM 8-20             | \$25.50 |
| 191129-BQ6 | BOY HUSKY 8-20            | \$25.50 |
| 191130-BQ9 | MEN 30-44 EVEN, 31-37 ODD | \$32.50 |

- Easy-care 60% polyester/40% cotton blend
- Reinforced pockets front and back
- Neat plain-front styling
- Little Boy has a back-elastic waist/snap closure
- Boy has a traditional waist/button closure

### Plain Front Stain/Wrinkle Resistant Chinos



**Approved colors:**

classic navy, khaki

**Grades 1-5 classic navy**

**Grades 6-8 khaki**

**Logo is not allowed**

|            |                           |         |
|------------|---------------------------|---------|
| 252118-BQ5 | Tots 2T-4T                | \$25.50 |
| 243847-BQ1 | LITTLE BOY 4-7            | \$25.50 |
| 243848-BQ6 | LITTLE BOY SLIM 4-7       | \$25.00 |
| 178254-BQ8 | BOY 8-20                  | \$25.50 |
| 190515-BQ3 | BOY SLIM 8-20             | \$25.50 |
| 178255-BQ2 | BOY HUSKY 8-20            | \$25.50 |
| 243850-BQ3 | MEN 30-44 EVEN, 31-37 ODD | \$32.50 |

- Soft 100% cotton
- Resists wrinkles, spills and stains
- Hidden adjustable waist provides a better fit
- Tots/Little Boy has back-elastic waist/snap closure
- Boy has a traditional waist/button closure



### Pleated Front Blend Chino Pants



**Approved colors:**

classic navy, khaki

**Grades 1-5 classic navy**

**Grades 6-8 khaki**

**Logo is not allowed**

|            |                           |         |
|------------|---------------------------|---------|
| 231061-BQ5 | LITTLE BOY 4-7            | \$25.50 |
| 231062-BQX | LITTLE BOY SLIM 4-7       | \$25.50 |
| 231063-BQ4 | BOY 8-20                  | \$25.50 |
| 231064-BQ9 | BOY SLIM 8-20             | \$25.50 |
| 231065-BQ3 | BOY HUSKY 8-20            | \$25.50 |
| 231066-BQ8 | MEN 30-44 EVEN, 31-37 ODD | \$32.50 |

- Easy-care 60% polyester/40% cotton blend
- Reinforced pockets front and back
- Little Boy has back-elastic waist/snap closure
- Boy has a traditional waist/button closure

### Pleated Front Stain/Wrinkle Resistant Chino Pants



**Approved colors:**

classic navy, khaki

**Grades 1-5 classic navy**

**Grades 6-8 wear khaki**

**Logo is not allowed**

|            |                     |         |
|------------|---------------------|---------|
| 252123-BQ6 | TOTS 2T-4T          | \$25.50 |
| 243851-BQ8 | LITTLE BOY 4-7      | \$25.50 |
| 243852-BQ2 | LITTLE BOY SLIM 4-7 | \$25.50 |
| 178435-BQ0 | BOY 8-20            | \$25.50 |
| 178439-BQ9 | BOY SLIM 8-20       | \$25.50 |
| 178437-BQX | BOY HUSKY 8-20      | \$25.50 |

- Soft 100% cotton
- Resists wrinkles, spills and stains
- Hidden adjustable waist provides a better fit
- Tots/Little Boy have back-elastic waist/snap closure
- Boy has a traditional waist/button closure
- Pre-hemmed

### Athletic Short



**Approved colors:**

dark navy

**Grades 1-8**

**Logo is optional**

**For logo #0830328K add \$5.50 per item**

|            |                |         |
|------------|----------------|---------|
| 315438-BQ1 | LITTLE BOY S-L | \$15.00 |
| 315439-BQ6 | BOY S-XL       | \$15.00 |
| 315440-BQ9 | MEN S-XL       | \$19.50 |

- 100% polyester, with a soft tricot lining
- Water-resistant fabric sheds the wet stuff
- Soft tricot lining for comfort
- Elastic waist with drawstring for a good fit
- Two side handwarmer pockets



### Athletic Pants



**Approved colors:**

dark navy

**Grades 1-8**

**Logo is optional**

**For logo #0830328K add \$5.50 per item**

|            |                |         |
|------------|----------------|---------|
| 322917-BQ9 | LITTLE BOY 4-7 | \$25.00 |
| 322919-BQ8 | BOY 8-20       | \$25.00 |
| 315437-BQ7 | MEN S-XL       | \$29.50 |

- Water-resistant fabric sheds the wet stuff, blocks the wind
- Ankle zippers for easy-on, easy-off
- Elastic waist with drawstring for a good fit
- Two side handwarmer pockets
- Zippered back pocket keeps money or a key secure

### Short Sleeve Solid Performance Super Tee



**Approved colors:**

classic navy

**All grades**

**Logo 0830328K is mandatory**

**Prices include logo**

|            |                |         |
|------------|----------------|---------|
| 063580-BQX | LITTLE KID S-L | \$16.00 |
| 063577-BQ8 | KID S-XL       | \$16.00 |
| 373194-BQ9 | MEN S-XXL      | \$18.00 |

- Virtually shrinkproof
- Colors won't fade away
- Most stains wash out
- No more pilling

### Long Sleeve Solid Performance Super Tee



**Approved colors:**

classic navy

**All grades**

**Logo 0830328K is mandatory**

**Prices include logo**

|            |                |         |
|------------|----------------|---------|
| 063587-BQ1 | LITTLE KID S-L | \$18.00 |
| 063582-BQ9 | KID S-XL       | \$18.00 |
| 373195-BQ3 | MEN S-XXL      | \$22.00 |

- Virtually shrinkproof
- Colors won't fade away
- Most stains wash out
- No more pilling



### 80/20 Fleece Crew



**Approved colors:**

classic navy

**All grades**

**Logo 0830328K is mandatory**

**Prices include logo**

|            |                |         |
|------------|----------------|---------|
| 306542-BQ1 | LITTLE Kid S-L | \$21.00 |
| 306544-BQ0 | Kid S-XL       | \$21.00 |
| 219474-BQ6 | MEN S-XXL      | \$25.00 |

- Heavy on the cottony softness, just enough polyester sturdiness
- Garment washing says, "bye-bye" to shrinkage
- Reinforced shoulders stand up to tugging and toddling
- Sag-resistant rib-knit neck, cuffs and bottom

### 80/20 Sweat Pants



**Approved colors:**

classic navy

**PK-K**

**Logo 0830328K is mandatory**

**Prices include logo**

|            |                |         |
|------------|----------------|---------|
| 316246-BQ2 | LITTLE Kid S-L | \$21.00 |
| 316247-BQ7 | Kid S-XL       | \$21.00 |
| 316248-BQ1 | MEN S-XL       | \$28.00 |

- 80% cotton/20% polyester
- Soft, comfy blend keeps its shape
- Elastic waist and drawstring for a good fit
- Elastic at the ankles

### Twill Sport Shorts



**Approved colors:**

classic navy

**PK-K**

**Logo 0830328K is mandatory**

**Prices include logo**

|            |                |         |
|------------|----------------|---------|
| 315363-BQ7 | Tots 2T-4T     | \$20.50 |
| 078506-BQ8 | LITTLE Kid S-L | \$20.50 |
| 078507-BQ2 | Kid S-XL       | \$20.50 |
| 078508-BQ7 | MEN S-XL       | \$25.00 |

- Easy-fitting elastic waist
- Side pockets, 1 rear pocket
- 100% cotton twill, prewashed to fight shrinkage
- Above-knee length



### Polar Fleece Vest



**Approved colors:**

classic navy

**Grades 1-8**

**Logo 0830328K is mandatory**

**Prices include logo**

|            |                |         |
|------------|----------------|---------|
| 188731-BQ1 | LITTLE Kid S-L | \$35.00 |
| 188730-BQ7 | Kids S-XL      | \$35.00 |
| 188729-BQ4 | MEN S-XXL      | \$40.50 |

- Double-sided fleece holds out chills
- Improved fabric reduces pilling
- Full-zip front
- Two zip pockets





### Short Sleeve Solid Performance Interlock Polo



**Approved colors:**

chambray blue, classic navy

**Grades 1-5 chambray blue**

**Grades 6-8 classic navy**

**Logo 0830328K is mandatory**

**Prices include logo**

|            |                |         |
|------------|----------------|---------|
| 051377-BQ8 | LITTLE Kid S-L | \$21.00 |
| 051402-BQ2 | Kid S-XL       | \$21.00 |
| 313702-BQ8 | WOMEN S-XL     | \$30.50 |

- Soft, 100% cotton interlock
- Won't shrink out of fit
- Won't pill or fade, wash after wash
- Stains wash out easier

### Long Sleeve Solid Performance Interlock Polo



**Approved colors:**

chambray blue, classic navy

**Grades 1-5 chambray blue**

**Grades 6-8 classic navy**

**Logo 0830328K is mandatory**

**Prices include logo**

|            |                |         |
|------------|----------------|---------|
| 051356-BQ6 | LITTLE Kid S-L | \$23.00 |
| 051369-BQ3 | Kid S-XL       | \$23.00 |
| 313699-BQX | WOMEN S-XL     | \$35.50 |

- Soft, 100% cotton interlock
- Won't shrink out of fit
- Won't pill or fade, wash after wash
- Stains wash out easier

### Short Sleeve Interlock Feminine Fit Polo



**Approved colors:**

chambray blue, classic navy

**Grades 1-5 chambray blue**

**Grades 6-8 classic navy**

**Logo 0830328K is mandatory**

**Prices include logo**

|            |                  |         |
|------------|------------------|---------|
| 230954-BQ8 | LITTLE GIRL S-L  | \$21.00 |
| 230955-BQ2 | GIRL S-XL        | \$21.00 |
| 230956-BQ7 | WOMEN S-XL       | \$30.50 |
| 315263-BQ4 | WOMEN PLUS 1X-3X | \$35.50 |

- Plush 100% cotton
- Resists fading/stains
- Top-of-hip length with side vents
- Sized to allow for shrinkage, please wash before wear



### Long Sleeve Interlock Feminine Fit Polo



**Approved colors:**

chambray blue, classic navy

**Grades 1-5 chambray blue**

**Grades 6-8 classic navy**

**Logo 0830328K is mandatory**

**Prices include logo**

|            |                  |         |
|------------|------------------|---------|
| 230957-BQ1 | LITTLE GIRL S-L  | \$23.00 |
| 230958-BQ6 | GIRL S-XL        | \$23.00 |
| 230959-BQ0 | WOMEN S-XL       | \$35.50 |
| 315269-BQ1 | WOMEN PLUS 1X-3X | \$40.50 |

- Plush 100% cotton
- Resists fading/stains
- Top-of-hip length with side vents
- Sized to allow for shrinkage, please wash before wear

### Drifter Zip Cardigan



**Approved colors:**

classic navy

**Grades 1-5**

**Logo 0830328K is mandatory**

**Prices include logo**

|            |                  |         |
|------------|------------------|---------|
| 223021-BQ3 | LITTLE Kid S-L   | \$40.50 |
| 223023-BQ2 | Kid S-XL         | \$40.50 |
| 223024-BQ7 | WOMEN S-XL       | \$45.00 |
| 315280-BQ8 | WOMEN PLUS 1X-3X | \$51.00 |

- Soft-as-can-be 100% cotton for all-day comfort
- Knit to eliminate excess bulk under the arms
- Full-zip front with easy grosgrain zipper pull

### Drifter V-neck Sweater



**Approved colors:**

classic navy

**Grades 6-8**

**Logo 0830328K is mandatory**

**Prices include logo**

|            |                |         |
|------------|----------------|---------|
| 223008-BQ8 | LITTLE Kid S-L | \$35.00 |
| 223010-BQ5 | Kids S-XL      | \$35.00 |
| 223011-BQX | WOMEN S-XL     | \$40.50 |

- Soft-as-can-be 100% cotton for all-day comfort
- Bulk-free fit under the arms
- V-neck makes it perfect for layering
- Shape-keeping rib-knit cuffs and hem



### Plain Front Blended Chino Pants



**Approved colors:**

classic navy, khaki

**Grades 1-5 classic navy**

**Grades 6-8 khaki**

**Logo is not allowed**

|            |                        |         |
|------------|------------------------|---------|
| 315346-BQ3 | TOTS 2T-4T             | \$25.50 |
| 231116-BQ2 | LITTLE GIRL 4-6X       | \$25.50 |
| 231117-BQ7 | LITTLE GIRL SLIM 4-6X  | \$25.50 |
| 231118-BQ1 | GIRL 7, 8-16 EVEN      | \$25.50 |
| 231119-BQ6 | GIRL SLIM 7, 8-16 EVEN | \$25.50 |
| 231120-BQ9 | GIRL PLUS 7, 8-16 EVEN | \$25.50 |
| 231121-BQ3 | WOMEN 00-20 EVEN       | \$32.50 |

- 60% cotton/40% polyester
- Blend fabric resists stains and wrinkles
- Inside adjustable waist helps fine-tune the fit

### Plain Front Stain Resistant Chino Pants



**Approved colors:**

classic navy, khaki

**Grades 1-5 classic navy**

**Grades 6-8 khaki**

**Logo is not allowed**

|            |                        |         |
|------------|------------------------|---------|
| 219336-BQ8 | LITTLE GIRL 4-6X       | \$29.50 |
| 219335-BQ3 | LITTLE GIRL SLIM 4-6X  | \$29.50 |
| 219338-BQ7 | GIRL 7, 8-16 EVEN      | \$29.50 |
| 219337-BQ2 | GIRL SLIM 7, 8-16 EVEN | \$29.50 |
| 219339-BQ1 | GIRL PLUS 7, 8-16 EVEN | \$29.50 |

- 98% cotton/2% spandex
- Performance fabric resists spills and stains
- Dash of stretch for added comfort
- Inside adjustable waist helps fine-tune the fit

### Plain Front Poly Blend Feminine Fit Pants



**Approved colors:**

classic navy, khaki

**Grades 1-5 classic navy**

**Grades 6-8 khaki**

**Logo is not allowed**

|            |                        |         |
|------------|------------------------|---------|
| 381249-BQ3 | GIRL 7, 8-16 EVEN      | \$29.50 |
| 381250-BQ6 | GIRL SLIM 7, 8-16 EVEN | \$29.50 |
| 381251-BQ0 | GIRL PLUS 7, 8-16 EVEN | \$29.50 |
| 381252-BQ5 | WOMEN 0-18 EVEN        | \$34.50 |

- 60% cotton/40% polyester
- Blend fabric resists stains and wrinkles
- Inside adjustable waist helps fine-tune the fit



### Pleated Front Blended Chino Pants



**Approved colors:**

classic navy, khaki

**Grades 1-5 classic navy**

**Grades 6-8 khaki**

**Logo is not allowed**

|            |                        |         |
|------------|------------------------|---------|
| 231110-BQ5 | LITTLE GIRL 4-6X       | \$25.50 |
| 231111-BQX | LITTLE GIRL SLIM 4-6X  | \$25.50 |
| 231112-BQ4 | GIRL 7, 8-16 EVEN      | \$25.50 |
| 231113-BQ9 | GIRL SLIM 7, 8-16 EVEN | \$25.50 |
| 231114-BQ3 | GIRL PLUS 7, 8-16 EVEN | \$25.50 |
| 231115-BQ8 | WOMEN 4-18 EVEN        | \$32.50 |

- 60% cotton/40% polyester
- Blend fabric resists stains and wrinkles
- Inside adjustable waist helps fine-tune the fit
- Little Girl: snap-front closure, back elastic for ease
- Girl: button-front closure

### Short Chino Skort



**Approved colors:**

classic navy, khaki

**Grades 1-5 classic navy**

**Grades 6-8 khaki**

**Logo is not allowed**

|            |                        |         |
|------------|------------------------|---------|
| 320192-BQX | LITTLE GIRL 4-6X       | \$22.50 |
| 320079-BQ1 | LITTLE GIRL SLIM 4-6X  | \$22.50 |
| 320134-BQ7 | GIRL 7, 8-16 EVEN      | \$22.50 |
| 320083-BQ8 | GIRL SLIM 7, 8-16 EVEN | \$22.50 |
| 320085-BQ7 | GIRL PLUS 7, 8-16 EVEN | \$22.50 |
| 320087-BQ6 | WOMEN 4-18 EVEN        | \$27.50 |

- 60% cotton/40% polyester
- Inside adjustable waist helps fine-tune the fit
- Roomy side pockets
- Above-knee length

### Athletic Shorts



**Approved colors:**

dark navy

**Grades 1-8**

**Logo is optional**

**For logo #0830328K add \$5.50 per item**

|            |                 |         |
|------------|-----------------|---------|
| 315426-BQ9 | LITTLE GIRL S-L | \$15.00 |
| 315427-BQ3 | GIRL S-XL       | \$15.00 |
| 315428-BQ8 | WOMEN S-XL      | \$19.50 |

- Comfortable elastic waist with adjustable drawcord
- Side pockets for storage
- 100% polyester fabric is weather resistant to shed the wet stuff
- Weather resistant



### Athletic Pants



**Approved colors:**

dark navy

**Grades 1-8**

**Logo is optional**

**For logo #0830328K add \$5.50 per item**

|            |                  |         |
|------------|------------------|---------|
| 322913-BQ0 | LITTLE GIRL 4-6X | \$25.00 |
| 322916-BQ4 | GIRL 7, 8-16     | \$25.00 |
| 315425-BQ4 | WOMEN S-XL       | \$29.50 |

- Designed just for her, with a more flattering fit through the waist and hips
- Comfortable elastic waist with adjustable drawcord
- Ankle zippers enable easy dressing over shoes
- Side pockets, plus one zippered back pocket for storage
- 100% polyester with a comfortable mesh lining
- Blocks the wind, weather resistant

### Short Sleeve Solid Performance Super Tee



**Approved colors:**

classic navy

**All grades**

**Logo 0830328K is mandatory**

**Prices include logo**

|            |                |         |
|------------|----------------|---------|
| 063580-BQX | LITTLE Kid S-L | \$16.00 |
| 063577-BQ8 | Kid S-XL       | \$16.00 |
| 168860-BQ9 | WOMEN S-XL     | \$18.00 |

- Virtually shrinkproof
- Colors won't fade away
- Most stains wash out
- No more pilling

### Long Sleeve Solid Performance Super Tee



**Approved colors:**

classic navy

**All grades**

**Logo 0830328K is mandatory**

**Prices include logo**

|            |                |         |
|------------|----------------|---------|
| 063587-BQ1 | LITTLE Kid S-L | \$18.00 |
| 063582-BQ9 | Kid S-XL       | \$18.00 |
| 168859-BQ6 | WOMEN S-XL     | \$22.00 |

- Virtually shrinkproof
- Colors won't fade away
- Most stains wash out
- No more pilling



### 80/20 Fleece Crew



**Approved colors:**

classic navy

**All grades**

**Logo 0830328K is mandatory**

**Prices include logo**

|            |                |         |
|------------|----------------|---------|
| 306542-BQ1 | LITTLE Kid S-L | \$21.00 |
| 306544-BQ0 | Kid S-XL       | \$21.00 |
| 219473-BQ1 | WOMEN S-XL     | \$25.00 |

- Heavy on the cottony softness, just enough polyester sturdiness
- Garment washing says, “bye-bye” to shrinkage
- Reinforced shoulders stand up to tugging and toddling
- Sag-resistant rib-knit neck, cuffs and bottom

### 80/20 Sweat Pants



**Approved colors:**

classic navy

**PK-K**

**Logo 0830328K is mandatory**

**Prices include logo**

|            |                |         |
|------------|----------------|---------|
| 316246-BQ2 | LITTLE Kid S-L | \$21.00 |
| 316247-BQ7 | Kid S-XL       | \$21.00 |
| 316249-BQ6 | WOMEN S-XL     | \$28.00 |

- 80% cotton/20% polyester
- Soft, comfy blend keeps its shape
- Elastic waist and drawstring for a good fit
- Elastic at the ankles

### Twill Sport Shorts



**Approved colors:**

classic navy

**PK-K**

**Logo 0830328K is mandatory**

**Prices include logo**

|            |                |         |
|------------|----------------|---------|
| 315363-BQ7 | Tots 2T-4T     | \$20.50 |
| 078506-BQ8 | LITTLE Kid S-L | \$20.50 |
| 078507-BQ2 | Kid S-XL       | \$20.50 |

- Easy-fitting elastic waist
- Side pockets, 1 rear pocket
- 100% cotton twill, prewashed to fight shrinkage
- Above-knee length



**Polar Fleece Vest**



**Approved colors:**

classic navy

**Grades 1-8**

**Logo 0830328K is mandatory**

**Prices include logo**

|            |                |         |
|------------|----------------|---------|
| 188731-BQ1 | LITTLE Kid S-L | \$35.00 |
| 188730-BQ7 | Kids S-XL      | \$35.00 |
| 188728-BQX | WOMEN S-XL     | \$40.50 |

- Double-sided fleece holds out chills
- Improved fabric reduces pilling
- Full-zip front
- Two zip pockets



### Washed Twill Cap



**Approved colors:**

black, classic navy, khaki, light stone

**Logo #0853480K is optional**

**For logo #0853480K add \$5.50 per item**

|            |          |        |
|------------|----------|--------|
| 220020-BQ3 | ONE SIZE | \$9.50 |
|------------|----------|--------|

- 100% washed cotton twill
- Soft, adjustable back strap
- Taller profile in front





## girls' and women's guide to a GREAT UNIFORM FIT

### ORDER THE RIGHT SIZE, FIRST TRY.

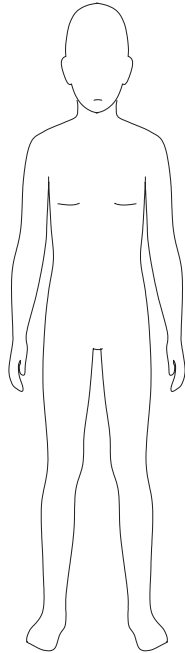
1. Kids grow fast, so measure your child every time you buy.
2. Remove bulky or heavy layers before measuring.
3. Begin with height, it's the best indicator to determine a child's size.
4. After height, a child's weight and/or waist measurement is the best gauge if your child needs an extended size (slim or plus).

### HOW DO I KNOW IF MY CHILD NEEDS AN EXTENDED SIZE?

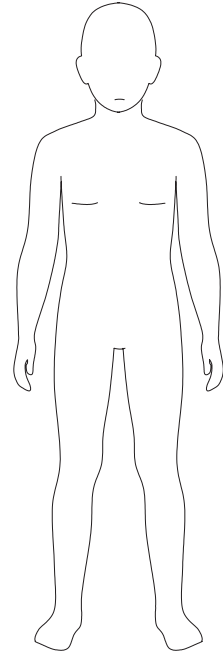
1. If you normally buy her a size 12 to fit her waist, but the inseam is always too long, she may need a 10 Plus (10+). Here's why: a 10+ will give her extra room around her waist, yet has a shorter inseam, for a better overall fit in the waist and length.
2. If you normally buy her a size 12 to fit her waist, but the inseam is always too short, she may need a 14 Slim (14S). Here's why: a 14S is slimmer through the waist, yet has a longer inseam, for a better overall fit in waist and length.

LANDS' END SCHOOL

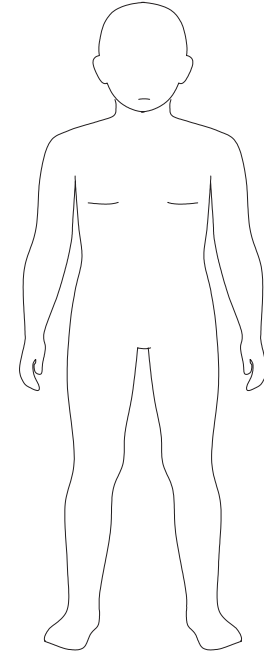
# girls' SIZE CHART



**SLIM (S)**  
Thin body and frame  
in relation to height



**REGULAR (R)**  
Average frame  
and proportions



**PLUS (+)**  
Fuller body in proportion  
to height

**REMEMBER! Start with height.**

**HEIGHT:** Child should stand in stocking feet, with feet shoulder width apart, back to a wall. Measure from the floor to the crown of head.

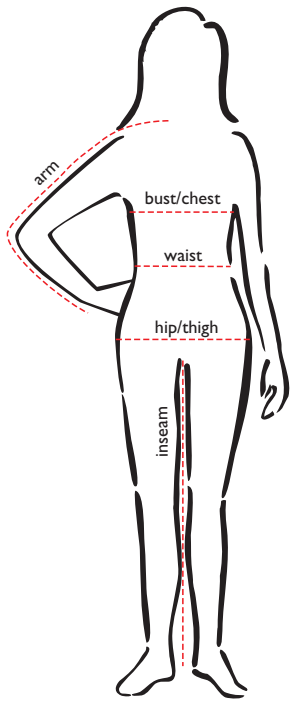
**WAIST:** Measure at natural waistline. Have the child bend to one side. Where the body curves is the natural waistline.

| Toddler |       |       |       |
|---------|-------|-------|-------|
| Size    | 2T    | 3T    | 4T    |
| Height  | 33-35 | 36-38 | 39-41 |
| Weight  | 27-29 | 30-33 | 34-38 |
| Waist   | 20    | 20½   | 21    |

| Little Girl (Slim, Reg) |       |       |        |       |       |       |             |
|-------------------------|-------|-------|--------|-------|-------|-------|-------------|
| Size                    | Small |       | Medium |       |       | Large |             |
|                         | 4S    | 4R    | 5S     | 5R    | 6S    | 6R    | 6XS 6XR     |
| Height                  | 39-41 |       | 42-44  |       | 45-47 |       | 47-49       |
| Weight                  | 32-34 | 34-38 | 35-39  | 39-44 | 40-45 | 45-49 | 46-48 49-53 |
| Waist                   | 19½   | 21½   | 20     | 22    | 20½   | 22½   | 21 23       |

| Big Girl (Slim, Reg, Plus) |       |       |       |       |       |       |        |       |       |       |        |         |        |         |         |         |         |         |
|----------------------------|-------|-------|-------|-------|-------|-------|--------|-------|-------|-------|--------|---------|--------|---------|---------|---------|---------|---------|
| Size                       | Small |       |       |       |       |       | Medium |       |       |       |        |         | Large  |         |         | X-Large |         |         |
|                            | 7S    | 7R    | 7+    | 8 S   | 8R    | 8+    | 10S    | 10R   | 10+   | 12S   | 12R    | 12+     | 14S    | 14R     | 14+     | 16S     | 16R     | 16+     |
| Height                     | 48-50 |       |       | 51-53 |       |       | 54-57  |       |       | 57-59 |        |         | 60-61  |         |         | 62-63   |         |         |
| Weight                     | 44-50 | 50-56 | 56-64 | 51-56 | 57-64 | 64-73 | 64-73  | 73-84 | 84-96 | 81-92 | 92-106 | 106-122 | 98-108 | 108-125 | 125-146 | 109-119 | 119-135 | 135-155 |
| Waist                      | 21½   | 23    | 27½   | 22    | 23½   | 28    | 23     | 24½   | 29    | 24    | 25½    | 30      | 25     | 26½     | 31      | 26      | 27½     | 32      |

# women's SIZE CHART



| Women's Tops  |          |    |         |      |       |      |        |      |       |      |         |      |      |      |      |      |      |      |      |      |      |      |
|---------------|----------|----|---------|------|-------|------|--------|------|-------|------|---------|------|------|------|------|------|------|------|------|------|------|------|
|               | xx-small |    | x-small |      | small |      | medium |      | large |      | x-large |      | 1X   |      | 2X   |      | 3X   |      | 4X   |      | 5X   |      |
| Size          | 00       | 0  | 2       | 4    | 6     | 8    | 10     | 12   | 14    | 16   | 18      | 20   | 16W  | 18W  | 20W  | 22W  | 24W  | 26W  | 28W  | 30W  | 32W  | 34W  |
| bust/chest    | 31       | 32 | 33      | 34   | 35    | 36   | 37     | 38 ½ | 40    | 41 ½ | 43 ½    | 45 ½ | 43   | 45   | 47   | 49   | 51   | 53   | 55   | 57   | 59   | 61   |
| arm (petite)  | 27 ¾     | 28 | 28 ¾    | 28 ¾ | 29 ½  | 29 ½ | 29 ¾   | 30 ¼ | 30 ¾  | 31   | 31 ¾    | 31 ¾ | --   | --   | --   | --   | --   | --   | --   | --   | --   | --   |
| arm (regular) | 28 ¾     | 29 | 29 ¾    | 29 ¾ | 30 ½  | 30 ½ | 30 ¾   | 31 ¼ | 31 ¾  | 32   | 32 ¾    | 32 ¾ | --   | --   | --   | --   | --   | --   | --   | --   | --   | --   |
| arm (tall)    | --       | -- | 30 ¾    | 30 ¾ | 31 ½  | 31 ½ | 31 ¾   | 32 ¼ | 32 ¾  | 33   | 33 ¾    | 33 ¾ | --   | --   | --   | --   | --   | --   | --   | --   | --   | --   |
| arm (women's) | --       | -- | --      | --   | --    | --   | --     | --   | --    | --   | --      | --   | 31 ¾ | 32 ½ | 32 ½ | 32 ¾ | 33 ½ | 33 ¾ | 33 ¾ | 33 ¾ | 34 ½ | 34 ¾ |

| Women's Bottoms |          |          |          |          |          |          |          |            |          |           |            |          |          |          |          |          |          |          |           |            |            |            |
|-----------------|----------|----------|----------|----------|----------|----------|----------|------------|----------|-----------|------------|----------|----------|----------|----------|----------|----------|----------|-----------|------------|------------|------------|
|                 | xx-small |          | x-small  |          | small    |          | medium   |            | large    |           | x-large    |          | 1X       |          | 2X       |          | 3X       |          | 4X        |            | 5X         |            |
| Size            | 00       | 0        | 2        | 4        | 6        | 8        | 10       | 12         | 14       | 16        | 18         | 20       | 16W      | 18W      | 20W      | 22W      | 24W      | 26W      | 28W       | 30W        | 32W        | 34W        |
| waist           | 24 to 25 | 25 to 26 | 26 to 27 | 27 to 28 | 28 to 29 | 29 to 30 | 30 to 31 | 31½ to 32½ | 33 to 34 | 34½ to 36 | 36½ to 38½ | 39 to 41 | 37 to 38 | 39 to 40 | 41 to 42 | 43 to 44 | 45 to 46 | 47 to 48 | 49 to 50½ | 51½ to 52½ | 53½ to 54½ | 55½ to 56½ |
| hip/thigh       | 34       | 35       | 36       | 37       | 38       | 39       | 40       | 41 ½       | 43       | 44 ½      | 46 ½       | 48 ½     | 46       | 48       | 50       | 52       | 54       | 56       | 58 ½      | 60         | 61 ½       | 63         |

To measure accurately, keep the tape measure taut, but don't pull it tight. Get a friend to help, if possible. Measure over well-fitting undergarments.

**BUST/CHEST:** measure around fullest part of chest, keeping tape parallel to the floor.

**ARM:** with hand on hip, measure from center back at neck, across shoulder, elbow, down to wrist bone.

**WAIST:** bend to side; measure where body curves – even if you wear your pants lower.

**HIPS:** with feet shoulder width apart, measure fullest part of hip/thigh area.

**INSEAM:** measure inside leg seam of pants from crotch to hem.

## Women's Regular, Petite, Tall or 18W-26W?

**Regular:** hips slightly larger than bust.

**Petite:** shorter in the torso. Shorter sleeves and body, narrower shoulders.

**Tall:** long torsos. Body length up 1-1/2" and sleeve length up 1" from Regular.

**Women's 18W-26W:** proportioned for fuller figures. 18W is 2" larger in the bust, waist and hip than 18 regular. Arm girths are larger; shoulder widths narrower.



## boys' and men's guide to a GREAT UNIFORM FIT

### ORDER THE RIGHT SIZE, FIRST TRY.

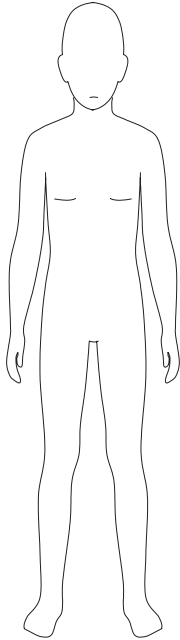
1. Kids grow fast, so measure your child every time you buy.
2. Remove bulky or heavy layers before measuring.
3. Begin with height, it's the best indicator to determine a child's size.
4. After height, a child's weight and/or waist measurement is the best gauge if your child needs an extended size (slim or plus).

### HOW DO I KNOW IF MY CHILD NEEDS AN EXTENDED SIZE?

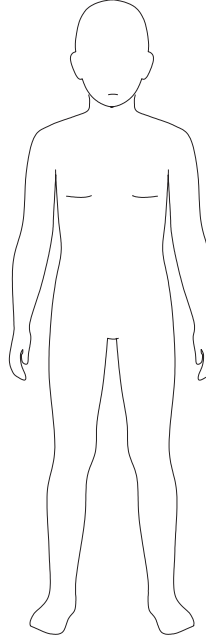
1. If you normally buy him a size 12 to fit his waist, but the inseam is always too long, he may need a 10 HUSKY (10H). Here's why: a 10H will give him extra room around his waist, yet has a shorter inseam, for a better overall fit in the waist and length.
2. If you normally buy him a size 12 to fit his waist, but the inseam is always too short, he may need a 14 Slim (14S). Here's why: a 14S is slimmer through the waist, yet has a longer inseam, for a better overall fit in waist and length.

LANDS' END SCHOOL

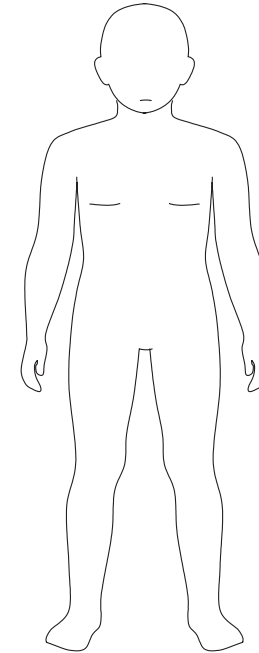
# boys' SIZE CHART



**SLIM (S)**  
Thin body and frame  
in relation to height



**REGULAR (R)**  
Average frame  
and proportions



**HUSKY (H)**  
Fuller body in proportion  
to height

**REMEMBER!** Start with height.

**HEIGHT:** Child should stand in stocking feet, with feet shoulder width apart, back to a wall. Measure from the floor to the crown of head.

**WAIST:** Measure at natural waistline. Have the child bend to one side. Where the body curves is the natural waistline.

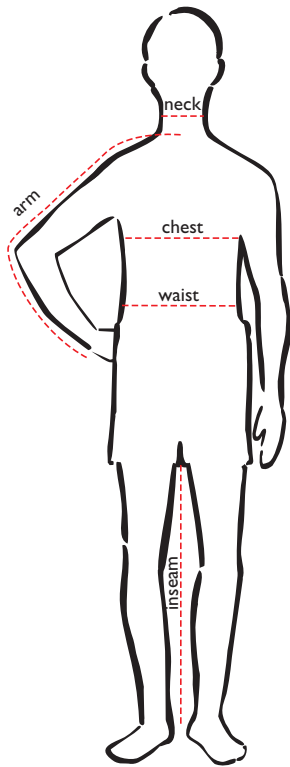
| Toddler |       |       |       |
|---------|-------|-------|-------|
| Size    | 2T    | 3T    | 4T    |
| Height  | 33-35 | 36-38 | 39-41 |
| Weight  | 27-29 | 30-33 | 34-38 |
| Waist   | 20    | 20½   | 21    |

| Little Boy (Slim, Reg) |       |       |        |       |       |       |       |       |  |
|------------------------|-------|-------|--------|-------|-------|-------|-------|-------|--|
| Size                   | Small |       | Medium |       |       |       | Large |       |  |
|                        | 4S    | 4R    | 5S     | 5R    | 6S    | 6R    | 7S    | 7R    |  |
| Height                 | 39-41 |       | 42-44  |       | 45-47 |       | 48-50 |       |  |
| Weight                 | 32-34 | 34-38 | 35-39  | 39-44 | 40-45 | 45-49 | 49-50 | 50-56 |  |
| Waist                  | 19½   | 21½   | 20     | 22    | 20½   | 22½   | 21    | 23    |  |

| Big Boy (Slim, Reg, Husky) |       |       |       |        |       |       |       |        |         |  |
|----------------------------|-------|-------|-------|--------|-------|-------|-------|--------|---------|--|
| Size                       | Small |       |       | Medium |       |       |       |        |         |  |
|                            | 8S    | 8R    | 8H    | 10S    | 10R   | 10H   | 12S   | 12R    | 12H     |  |
| Height                     | 51-53 |       |       | 54-57  |       |       | 58-61 |        |         |  |
| Weight                     | 52-56 | 56-64 | 64-72 | 62-70  | 70-80 | 80-92 | 78-90 | 90-102 | 102-118 |  |
| Waist                      | 21½   | 23½   | 26½   | 22½    | 24½   | 27½   | 23½   | 25½    | 28½     |  |

| Big Boy (Slim, Reg, Husky) |        |         |         |         |         |         |         |         |         |         |         |         |
|----------------------------|--------|---------|---------|---------|---------|---------|---------|---------|---------|---------|---------|---------|
| Size                       | Large  |         |         |         |         |         | X-Large |         |         |         |         |         |
|                            | 14S    | 14R     | 14H     | 16S     | 16R     | 16H     | 18S     | 18R     | 18H     | 20S     | 20R     | 20H     |
| Height                     | 62-63  |         |         | 64-65   |         |         | 66-67   |         |         | 68-70   |         |         |
| Weight                     | 95-102 | 112-128 | 128-146 | 120-134 | 134-152 | 152-162 | 134-148 | 148-166 | 164-172 | 140-156 | 156-174 | 174-196 |
| Waist                      | 24½    | 26½     | 29½     | 26      | 28      | 31      | 27      | 29      | 32      | 28      | 30      | 33      |

# men's SIZE CHART



| Men's              |       |      |        |      |       |      |         |      |          |      |      |      |      |      |      |      |      |      |
|--------------------|-------|------|--------|------|-------|------|---------|------|----------|------|------|------|------|------|------|------|------|------|
|                    | small |      | medium |      | large |      | x-large |      | xx-large |      | 2XL  |      | 3XL  |      | 4XL  |      | 5XL  |      |
| neck               | 14    | 14 ¼ | 15     | 15½  | 16    | 16 ½ | 17      | 17 ½ | 18       | 18 ½ | 18   | 18 ½ | 19   | 19 ½ | 20   | 20 ½ | 21   | 21 ½ |
| chest              | 34    | 36   | 38     | 40   | 42    | 44   | 46      | 48   | 50       | 52   | 50   | 52   | 54   | 56   | 58   | 60   | 62   | 64   |
| arm<br>(regular)   | 32 ½  | 33   | 33 ½   | 34   | 34 ½  | 35   | 35 ½    | 36   | 36 ½     | 36 ½ | 35   | 35 ½ | 36   | 36 ½ | 37   | 37 ½ | 38   | 38 ½ |
| arm<br>(tall)      | 34    | 34 ½ | 35     | 35 ½ | 36    | 36 ½ | 37      | 37 ½ | 38       | 38   | 36 ½ | 37   | 37 ½ | 38   | 38 ½ | 39   | 39 ½ | 40   |
| waist<br>(regular) | 28    | 30   | 32     | 34   | 36    | 38   | 40      | 42   | 44       | 46   | 48   | 48   | 50   | 52   | 54   | 56   | 58   | 60   |
| hips               | 34    | 36   | 38     | 40   | 42    | 44   | 45 ½    | 47   | 48 ½     | 50   | 51 ¾ |      | 53 ½ | 54 ¾ | 55 ¼ | 55 ¾ | 56 ¼ | 56 ¾ |

To measure accurately, keep the tape measure taut, but don't pull it tight. Get a friend to help, if possible. Measure over well-fitting undergarments.

**CHEST:** measure around fullest part of chest, keeping tape parallel to the floor.

**ARM:** with hand on hip, measure from center back at neck, across shoulder, elbow, down to wrist bone.

**WAIST:** bend to side; measure where body curves – even if you wear your pants lower.

**HIPS:** with feet shoulder width apart, measure fullest part of hip/thigh area.

**INSEAM:** measure inside leg seam of pants from crotch to hem.

## Men's Regular, Tall or Big?

**Regular:** hips and chest of equal girth.

**Tall (or Long):** long torso. Body of shirts is 1-1/2" to 2" longer than Regular. Coat sleeve and body length is 1-1/2" longer.

**Big:** average torso length, just larger overall. Pockets and other details increase in size for a pleasing proportion.