



# LANDS' END SCHOOL

Saint John's Catholic Prep  
889 Butterfly Lane  
Frederick, MD 21703  
Preferred School Number: 900119215

# Welcome to Lands' End School!

## Guaranteed. Period.®

If you're not satisfied with any item, return it to us at any time for an exchange or refund of its purchase price.

## Pass-along quality.

We're serious about comfort, construction and durability. So our products hold up from the first day of school to the last. (And through the next kid in line.)

Shop by dress code online. Preferred Schools can view their dress code online to make ordering even easier.

## 3% cash back.

Preferred Schools earn 3% cash back on all uniform purchases. It's easy and free to sign up – visit [landsend.com/school](http://landsend.com/school)

## Sizes for grades pre-K to 12.

We offer a great selection of Slim, Plus and Husky sizes for boys and girls.



1-800-469-2222

[landsend.com/school](http://landsend.com/school)

# LANDS' END SCHOOL

All prices in U.S. dollars. Prices subject to change.  
©Copyright 2009, Lands' End, Inc. All rights reserved.



### LOGO #0727003K, Blazer Logo, \$8.10

- Logo is restricted and may only be applied to Blazers
- Personalized monograms are not allowed with this logo
- Logo and fabric shown are for display purposes only
- Actual embroidery thread colors may vary



Saint John's Catholic Prep

### LOGO #0833733K, School Name with Cross, \$5.50

- Your school has provided this logo and set certain restrictions regarding its use. Please check each individual product in your Dress Code for details
- Personalized monograms are not allowed with this logo
- Logo and fabric shown are for display purposes only
- Actual embroidery thread colors may vary



### Hopsack Blazer



**Approved colors:**

deep navy

**Logo #0727003K is mandatory**

**Prices include logo**

090368-BQ0	LITTLE Boy 4-7	\$87.60
090369-BQ5	Boy 8-20	\$87.60
090370-BQ8	Boy Husky 8-20	\$87.60
315357-BQ1	MEN 34-48	\$163.10

- 55% polyester/45% wool sheds wrinkles, reduces pilling
- Fully lined for comfort
- Padded shoulders
- Felt-lined collar

### Short Sleeve Solid Performance Mesh Polo



**Approved colors:**

deep purple, evergreen

**Logo #0833733K is mandatory**

**Seniors wear deep purple and evergreen; rest of grades wear evergreen only**

**Prices include logo**

051465-BQ8	TOTS 2T-4T	\$21.00
051467-BQ7	LITTLE Kid S-L	\$21.00
051469-BQ6	Kid S-XL	\$21.00
167541-BQ6	MEN S-XXL	\$25.00

- Soft, 100% cotton mesh
- Resists shrinkage, fading and pilling
- Stains wash out easier

### Long Sleeve Solid Performance Mesh Polo



**Approved colors:**

deep purple, evergreen

**Logo #0833733K is mandatory**

**Seniors wear deep purple and evergreen; rest of grades wear evergreen only**

**Prices include logo**

051422-BQX	TOTS 2T-4T	\$23.00
051437-BQ6	LITTLE Kid S-L	\$23.00
051438-BQ0	Kid S-XL	\$23.00
167539-BQ9	MEN S-XXL	\$30.50
315251-BQ1	MEN TALL M-XXL	\$35.50

- Soft, 100% cotton mesh
- Resists shrinkage, fading and pilling
- Stains wash out easier



### Short Sleeve Solid Performance Interlock Polo



**Approved colors:**

deep purple

**Logo #0833733K is mandatory  
Seniors only**

**Prices include logo**

051377-BQ8	LITTLE Kid S-L	\$21.00
051402-BQ2	Kid S-XL	\$21.00
313701-BQ3	MEN S-XL	\$30.50

- Soft, 100% cotton interlock
- Won't shrink out of fit
- Won't pill or fade, wash after wash
- Stains wash out easier

### Long Sleeve Solid Performance Interlock Polo



**Approved colors:**

deep purple

**Logo #0833733K is mandatory  
Seniors only**

**Prices include logo**

051356-BQ6	LITTLE Kid S-L	\$21.00
051369-BQ3	Kid S-XL	\$21.00
313700-BQ9	MEN S-XL	\$30.50

- Soft, 100% cotton interlock
- Won't shrink out of fit
- Won't pill or fade, wash after wash
- Stains wash out easier

### Short Sleeve Solid 60/40 Oxford Shirt



**Approved colors:**

white

**Logo is not allowed**

219302-BQ9	LITTLE Boy 4-7	\$17.50
219304-BQ8	Boy 8-20	\$17.50
219305-BQ2	Boy Husky 8-20	\$17.50
029414-BQ7	MEN S-XXL	\$22.50

- Easy-care 60% cotton/40% polyester blend
- Back yoke and box pleat for easy reaches
- Finely stitched double-needle seams



### Long Sleeve Solid 60/40 Oxford Shirt



**Approved colors:**

white

**Logo is not allowed**

219315-BQ6	LITTLE BOY 4-7	\$19.50
219308-BQ6	BOY 8-20	\$19.50
219312-BQ2	BOY HUSKY 8-20	\$19.50
029413-BQ2	MEN S-XXL	\$24.50

- Easy-care 60% cotton/40% polyester blend
- Back yoke and box pleat for easy reaches
- Finely stitched double-needle seams

### Drifter V-neck Sweater



**Approved colors:**

evergreen

**Logo #0833733K is mandatory**

**Prices include logo**

223008-BQ8	LITTLE Kid S-L	\$35.00
223010-BQ5	KIDS S-XL	\$35.00
223013-BQ9	MEN S-XL	\$40.50

- Soft-as-can-be 100% cotton for all-day comfort
- Bulk-free fit under the arms
- V-neck makes it perfect for layering
- Shape-keeping rib-knit cuffs and hem

### Drifter Sweater Vest



**Approved colors:**

evergreen

**Logo #0833733K is mandatory**

**Prices include logo**

223014-BQ3	LITTLE Kid S-L	\$30.50
223015-BQ8	KIDS S-XL	\$30.50
223018-BQ1	MEN S-XL	\$35.00

- Soft-as-can-be cotton for all-day comfort
- Rib-knit trim keeps its shape wash after wash
- Adds a fresh look to any outfit



### Plain Front Chino Pants



**Approved colors:**

khaki

**Logo is not allowed**

191125-BQ8	LITTLE BOY 4-7	\$25.50
191126-BQ2	LITTLE BOY SLIM 4-7	\$25.50
191127-BQ7	BOY 8-20	\$25.50
191128-BQ1	BOY SLIM 8-20	\$25.50
191129-BQ6	BOY HUSKY 8-20	\$25.50
191130-BQ9	MEN 30-44 EVEN, 31-37 Odd	\$32.50

- Easy-care 60% polyester/40% cotton blend
- Reinforced pockets front and back
- Neat plain-front styling
- Little Boy has a back-elastic waist/snap closure
- Boy has a traditional waist/button closure

### Plain Front Stain/Wrinkle Resistant Chinos



**Approved colors:**

khaki

**Logo is not allowed**

252118-BQ5	TOTS 2T-4T	\$25.50
243847-BQ1	LITTLE BOY 4-7	\$25.50
243848-BQ6	LITTLE BOY SLIM 4-7	\$25.00
178254-BQ8	BOY 8-20	\$25.50
190515-BQ3	BOY SLIM 8-20	\$25.50
178255-BQ2	BOY HUSKY 8-20	\$25.50
243850-BQ3	MEN 30-44 EVEN, 31-37 Odd	\$32.50

- Soft 100% cotton
- Resists wrinkles, spills and stains
- Hidden adjustable waist provides a better fit
- Tots/Little Boy has back-elastic waist/snap closure
- Boy has a traditional waist/button closure
- Pre-hemmed

### Pleated Front Blend Chino Pants



**Approved colors:**

khaki

**Logo is not allowed**

231061-BQ5	LITTLE BOY 4-7	\$25.50
231062-BQX	LITTLE BOY SLIM 4-7	\$25.50
231063-BQ4	BOY 8-20	\$25.50
231064-BQ9	BOY SLIM 8-20	\$25.50
231065-BQ3	BOY HUSKY 8-20	\$25.50
231066-BQ8	MEN 30-44 EVEN, 31-37 Odd	\$32.50

- Easy-care 60% polyester/40% cotton blend
- Reinforced pockets front and back
- Little Boy has back-elastic waist/snap closure
- Boy has a traditional waist/button closure



### Pleated Front Stain/Wrinkle Resistant Chino Pants



**Approved colors:**

khaki

**Logo is not allowed**

243851-BQ8	LITTLE BOY 4-7	\$25.50
243852-BQ2	LITTLE BOY SLIM 4-7	\$25.50
178435-BQ0	BOY 8-20	\$25.50
178439-BQ9	BOY SLIM 8-20	\$25.50
178437-BQX	BOY HUSKY 8-20	\$25.50

- Soft 100% cotton
- Resists wrinkles, spills and stains
- Hidden adjustable waist provides a better fit
- Tots/Little Boy have back-elastic waist/snap closure
- Boy has a traditional waist/button closure
- Pre-hemmed

### Athletic Short



**Approved colors:**

classic black

**Logo is not allowed**

315438-BQ1	LITTLE BOY S-L	\$15.00
315439-BQ6	BOY S-XL	\$15.00
315440-BQ9	MEN S-XL	\$19.50

- 100% polyester, with a soft tricot lining
- Water-resistant fabric sheds the wet stuff
- Soft tricot lining for comfort
- Elastic waist with drawstring for a good fit
- Two side handwarmer pockets

### Short Sleeve Solid Performance Super Tee



**Approved colors:**

evergreen

**Logo is not allowed**

063580-BQX	LITTLE KID S-L	\$10.50
063577-BQ8	KID S-XL	\$10.50
373194-BQ9	MEN S-XXL	\$12.50

- Virtually shrinkproof
- Colors won't fade away
- Most stains wash out
- No more pilling



### Long Sleeve Solid Performance Super Tee



**Approved colors:**

evergreen

**Logo is not allowed**

063587-BQ1	LITTLE Kid S-L	\$12.50
063582-BQ9	Kid S-XL	\$12.50
373195-BQ3	MEN S-XXL	\$16.50

- Virtually shrinkproof
- Colors won't fade away
- Most stains wash out
- No more pilling

### Polar Fleece Jacket



**Approved colors:**

black, evergreen

**Logo #0833733K is mandatory**

**Seniors wear black only; rest of grades wear evergreen only**

**Prices include logo**

188727-BQ5	LITTLE Kid S-L	\$35.00
188726-BQ0	Kids S-XL	\$35.00
188725-BQ6	MEN S-XXL	\$40.50

- Double-sided fleece holds out chills
- Improved fabric reduces pilling
- Full-zip front
- Two zip pockets



### Hopsack Blazer



**Approved colors:**

deep navy

**Logo #0727003K is mandatory**

**Prices include logo**

219457-BQ2	LITTLE GIRL 4-6X	\$87.60
219458-BQ7	GIRL 7, 8-16 EVEN	\$87.60
219459-BQ1	GIRL PLUS 7, 8-16 EVEN	\$87.60
320065-BQX	WOMEN 4-20	\$163.10

- Feminine cut falls higher on the hip for a better fit
- 55% polyester/45% wool shakes off wrinkles
- Fully lined for easy on/off and all-day comfort

### Short Sleeve Solid Performance Mesh Polo



**Approved colors:**

deep purple, evergreen

**Logo #0833733K is mandatory**

**Seniors wear deep purple and evergreen; rest of grades wear evergreen only**

**Prices include logo**

051465-BQ8	TOTS 2T-4T	\$21.00
051467-BQ7	LITTLE Kid S-L	\$21.00
051469-BQ6	Kid S-XL	\$21.00
167542-BQ0	WOMEN S-XL	\$25.00

- Soft, 100% cotton mesh
- Resists shrinkage, fading and pilling
- Stains wash out easier

### Long Sleeve Solid Performance Mesh Polo



**Approved colors:**

deep purple, evergreen

**Logo #0833733K is mandatory**

**Seniors wear deep purple and evergreen; rest of grades wear evergreen only**

**Prices include logo**

051422-BQX	TOTS 2T-4T	\$23.00
051437-BQ6	LITTLE Kid S-L	\$23.00
051438-BQ0	Kid S-XL	\$23.00
167540-BQ1	WOMEN S-XL	\$30.50

- Soft, 100% cotton mesh
- Resists shrinkage, fading and pilling
- Stains wash out easier



### Short Sleeve Feminine Fit Mesh Polo



**Approved colors:**  
deep purple, evergreen

**Logo #0833733K is mandatory**  
**Seniors wear deep purple and evergreen; rest of grades wear evergreen only**

**Prices include logo**

230948-BQ2	LITTLE GIRL S-L	\$21.00
230949-BQ7	GIRL S-XL	\$21.00
230950-BQX	WOMEN XS-XL	\$25.00
315253-BQ0	WOMEN PLUS 1X-3X	\$30.50

- 100% cotton
- Soft, mesh fabric keeps her cool
- Gently shaped side seams are more flattering
- Enhanced fabric keeps colors true
- Resists stains and shrinkage
- Top-of-hip length with side vents

### Long Sleeve Mesh Feminine Fit Polo



**Approved colors:**  
deep purple, evergreen

**Logo #0833733K is mandatory**  
**Seniors wear deep purple and evergreen; rest of grades wear evergreen only**

**Prices include logo**

230951-BQ4	LITTLE GIRL S-L	\$23.00
230952-BQ9	GIRL S-XL	\$23.00
230953-BQ3	WOMEN XS-XL	\$35.50
315261-BQ5	WOMEN PLUS 1X-3X	\$40.50

- 100% cotton
- Soft, mesh fabric keeps her cool
- Gently shaped side seams are more flattering
- Enhanced fabric keeps colors true
- Resists stains and shrinkage
- Top-of-hip length with side vents

### Short Sleeve Solid Performance Interlock Polo



**Approved colors:**  
deep purple, evergreen

**Logo #0833733K is mandatory**  
**Seniors only**

**Prices include logo**

051377-BQ8	LITTLE Kid S-L	\$21.00
051402-BQ2	Kid S-XL	\$21.00
313702-BQ8	WOMEN S-XL	\$30.50

- Soft, 100% cotton interlock
- Won't shrink out of fit
- Won't pill or fade, wash after wash
- Stains wash out easier



### Long Sleeve Solid Performance Interlock Polo



**Approved colors:**  
deep purple, evergreen

**Logo #0833733K is mandatory**  
**Seniors only**

**Prices include logo**

051356-BQ6	LITTLE Kid S-L	\$23.00
051369-BQ3	Kid S-XL	\$23.00
313699-BQX	WOMEN S-XL	\$35.50

- Soft, 100% cotton interlock
- Won't shrink out of fit
- Won't pill or fade, wash after wash
- Stains wash out easier

### Short Sleeve Interlock Feminine Fit Polo



**Approved colors:**  
deep purple, evergreen

**Logo #0833733K is mandatory**  
**Seniors only**

**Prices include logo**

230954-BQ8	LITTLE GIRL S-L	\$21.00
230955-BQ2	GIRL S-XL	\$21.00
230956-BQ7	WOMEN S-XL	\$30.50
315263-BQ4	WOMEN PLUS 1X-3X	\$35.50

- Plush 100% cotton
- Resists fading/stains
- Top-of-hip length with side vents
- Sized to allow for shrinkage, please wash before wear

### Long Sleeve Interlock Feminine Fit Polo



**Approved colors:**  
deep purple, evergreen

**Logo #0833733K is mandatory**  
**Seniors only**

**Prices include logo**

230957-BQ1	LITTLE GIRL S-L	\$23.00
230958-BQ6	GIRL S-XL	\$23.00
230959-BQ0	WOMEN S-XL	\$35.50
315269-BQ1	WOMEN PLUS 1X-3X	\$40.50

- Plush 100% cotton
- Resists fading/stains
- Top-of-hip length with side vents
- Sized to allow for shrinkage, please wash before wear



### Short Sleeve Oxford Shirt



**Approved colors:**

white

**Logo is not allowed**

219321-BQ1	LITTLE GIRL 4-6X	\$18.00
219322-BQ6	GIRL 7, 8-16 EVEN	\$18.00
284295-BQX	WOMEN XS-XL	\$24.50
315308-BQ8	WOMEN PLUS 1X-3X	\$28.00

- 60% cotton/40% polyester fabric foils wrinkles
- Breathable easy care fabric
- Feminine fit

### Long Sleeve Oxford Shirt



**Approved colors:**

white

**Logo is not allowed**

219323-BQ0	LITTLE GIRL 4-6X	\$19.50
219324-BQ5	GIRL 7, 8-16 EVEN	\$19.50
284294-BQ5	WOMEN XS-XL	\$25.00
315311-BQX	WOMEN PLUS 1X-3X	\$29.50

- 60% cotton/40% polyester fabric foils wrinkles
- Breathable easy care fabric
- Feminine fit

### Drifter V-neck Sweater



**Approved colors:**

evergreen

**Logo #0833733K is mandatory**

**Prices include logo**

223008-BQ8	LITTLE Kid S-L	\$35.00
223010-BQ5	KIDS S-XL	\$35.00
223011-BQX	WOMEN S-XL	\$40.50

- Soft-as-can-be 100% cotton for all-day comfort
- Bulk-free fit under the arms
- V-neck makes it perfect for layering
- Shape-keeping rib-knit cuffs and hem



### Drifter Sweater Vest



**Approved colors:**

evergreen

**Logo #0833733K is mandatory**

**Prices include logo**

223014-BQ3	LITTLE Kid S-L	\$30.50
223015-BQ8	Kids S-XL	\$30.50
223016-BQ2	WOMEN S-XL	\$35.00

- Soft-as-can-be cotton for all-day comfort
- Rib-knit trim keeps its shape wash after wash
- Adds a fresh look to any outfit

### Plain Front Blended Chino Pants



**Approved colors:**

khaki

**Logo is not allowed**

315346-BQ3	TOTS 2T-4T	\$25.50
231116-BQ2	LITTLE GIRL 4-6X	\$25.50
231117-BQ7	LITTLE GIRL SLIM 4-6X	\$25.50
231118-BQ1	GIRL 7, 8-16 EVEN	\$25.50
231119-BQ6	GIRL SLIM 7, 8-16 EVEN	\$25.50
231120-BQ9	GIRL PLUS 7, 8-16 EVEN	\$25.50
231121-BQ3	WOMEN 00-20 EVEN	\$32.50

- 60% cotton/40% polyester
- Blend fabric resists stains and wrinkles
- Inside adjustable waist helps fine-tune the fit

### Plain Front Stain Resistant Chino Pants



**Approved colors:**

khaki

**Logo is not allowed**

219336-BQ8	LITTLE GIRL 4-6X	\$29.50
219335-BQ3	LITTLE GIRL SLIM 4-6X	\$29.50
219338-BQ7	GIRL 7, 8-16 EVEN	\$29.50
219337-BQ2	GIRL SLIM 7, 8-16 EVEN	\$29.50
219339-BQ1	GIRL PLUS 7, 8-16 EVEN	\$29.50

- 98% cotton/2% spandex
- Performance fabric resists spills and stains
- Dash of stretch for added comfort
- Inside adjustable waist helps fine-tune the fit



### Plain Front Poly Blend Feminine Fit Pants



**Approved colors:**

khaki

**Logo is not allowed**

381249-BQ3	GIRL 7, 8-16 EVEN	\$29.50
381250-BQ6	GIRL SLIM 7, 8-16 EVEN	\$29.50
381251-BQ0	GIRL PLUS 7, 8-16 EVEN	\$29.50
381252-BQ5	WOMEN 0-18 EVEN	\$34.50

- 60% cotton/40% polyester
- Blend fabric resists stains and wrinkles
- Inside adjustable waist helps fine-tune the fit

### Pleated Front Blended Chino Pants



**Approved colors:**

khaki

**Logo is not allowed**

231110-BQ5	LITTLE GIRL 4-6X	\$25.50
231111-BQX	LITTLE GIRL SLIM 4-6X	\$25.50
231112-BQ4	GIRL 7, 8-16 EVEN	\$25.50
231113-BQ9	GIRL SLIM 7, 8-16 EVEN	\$25.50
231114-BQ3	GIRL PLUS 7, 8-16 EVEN	\$25.50
231115-BQ8	WOMEN 4-18 EVEN	\$32.50

- 60% cotton/40% polyester
- Blend fabric resists stains and wrinkles
- Inside adjustable waist helps fine-tune the fit
- Little Girl: snap-front closure, back elastic for ease
- Girl: button-front closure

### Solid A Line Skirt



**Approved colors:**

khaki

**Logo is not allowed**

068043-BQ4	LITTLE GIRL 4-6X	\$29.50
068044-BQ9	LITTLE GIRL SLIM 4-6X	\$29.50
068045-BQ3	GIRL 7, 8-16 EVEN	\$29.50
068046-BQ8	GIRL SLIM 7, 8-16 EVEN	\$29.50
068047-BQ2	GIRL PLUS 7, 8-16 EVEN	\$29.50
250212-BQ7	WOMEN 00-20 EVEN	\$35.00

- Unique fabric blend resists wrinkles, lets you skip ironing!
- Elastic-back waistband won't gouge her middle
- Hidden side zipper and button closure looks tidy, makes dressing easy



### 2 Button Stretch Chino Skort



**Approved colors:**

khaki

**Logo is not allowed**

250205-BQ7	LITTLE GIRL 4-6X	\$25.00
250206-BQ1	LITTLE GIRL SLIM 4-6X	\$25.00
250207-BQ6	GIRL 7, 8-16 EVEN	\$25.00
250208-BQ0	GIRL SLIM 7, 8-16 EVEN	\$25.00
250209-BQ5	GIRL PLUS 7, 8-16 EVEN	\$25.00
250210-BQ8	WOMEN 4-18 EVEN	\$29.50

- 98% cotton/2% spandex sheds stains
- Touch of spandex for running, jumping ease
- Two pockets in front; one in back
- All-cotton knit shorts inside with a comfy waistband
- Inside adjustable waist helps fine-tune the fit
- Above-the-knee length

### Athletic Shorts



**Approved colors:**

classic black

**Logo is not allowed**

315426-BQ9	LITTLE GIRL S-L	\$15.00
315427-BQ3	GIRL S-XL	\$15.00
315428-BQ8	WOMEN S-XL	\$19.50

- Comfortable elastic waist with adjustable drawcord
- Side pockets for storage
- 100% polyester fabric is weather resistant to shed the wet stuff
- Weather resistant

### Short Sleeve Solid Performance Super Tee



**Approved colors:**

evergreen

**Logo is not allowed**

063580-BQX	LITTLE KID S-L	\$10.50
063577-BQ8	KID S-XL	\$10.50
168860-BQ9	WOMEN S-XL	\$12.50

- Virtually shrinkproof
- Colors won't fade away
- Most stains wash out
- No more pilling



### Long Sleeve Solid Performance Super Tee



**Approved colors:**

evergreen

**Logo is not allowed**

063587-BQ1	LITTLE Kid S-L	\$12.50
063582-BQ9	Kid S-XL	\$12.50
168859-BQ6	WOMEN S-XL	\$16.50

- Virtually shrinkproof
- Colors won't fade away
- Most stains wash out
- No more pilling

### Short Sleeve Feminine Fit Tee



**Approved colors:**

evergreen

**Logo is not allowed**

315303-BQ5	LITTLE GIRL S-L	\$10.50
315305-BQ4	GIRL S-XL	\$10.50
315306-BQ9	WOMEN S-XL	\$12.50

- Soft 100% cotton
- Performance fabric fights fading, stains and shrinkage
- Virtually shrinkproof, resists pilling
- Same fit as our Feminine Fit polo
- Slightly shorter sleeves

### Long Sleeve Feminine Fit Tee



**Approved colors:**

evergreen

**Logo is not allowed**

316740-BQ9	LITTLE GIRL S-L	\$12.50
316741-BQ3	GIRL S-XL	\$12.50
316742-BQ8	WOMEN S-XL	\$16.50

- Soft 100% cotton
- Performance fabric fights fading, stains and shrinkage
- Virtually shrinkproof, resists pilling
- Same fit as our Feminine Fit polo
- Slightly shorter sleeves



**Polar Fleece Jacket**



**Approved colors:**

black, evergreen

**Logo #0833733K is mandatory**  
**Seniors wear black only; rest of grades wear**  
**evergreen only**

**Prices include logo**

188727-BQ5	LITTLE Kid S-L	\$35.00
188726-BQ0	Kids S-XL	\$35.00
188724-BQ1	WOMEN S-XL	\$40.50

- Double-sided fleece holds out chills
- Improved fabric reduces pilling
- Full-zip front
- Two zip pockets



## girls' and women's guide to a GREAT UNIFORM FIT

### ORDER THE RIGHT SIZE, FIRST TRY.

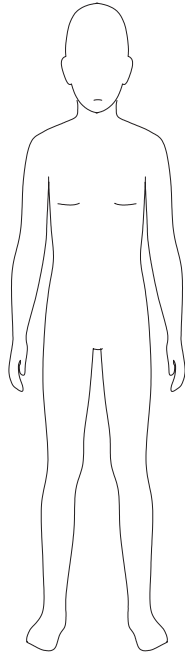
1. Kids grow fast, so measure your child every time you buy.
2. Remove bulky or heavy layers before measuring.
3. Begin with height, it's the best indicator to determine a child's size.
4. After height, a child's weight and/or waist measurement is the best gauge if your child needs an extended size (slim or plus).

### HOW DO I KNOW IF MY CHILD NEEDS AN EXTENDED SIZE?

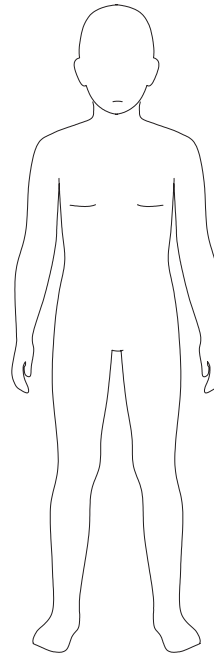
1. If you normally buy her a size 12 to fit her waist, but the inseam is always too long, she may need a 10 Plus (10+). Here's why: a 10+ will give her extra room around her waist, yet has a shorter inseam, for a better overall fit in the waist and length.
2. If you normally buy her a size 12 to fit her waist, but the inseam is always too short, she may need a 14 Slim (14S). Here's why: a 14S is slimmer through the waist, yet has a longer inseam, for a better overall fit in waist and length.

LANDS' END SCHOOL

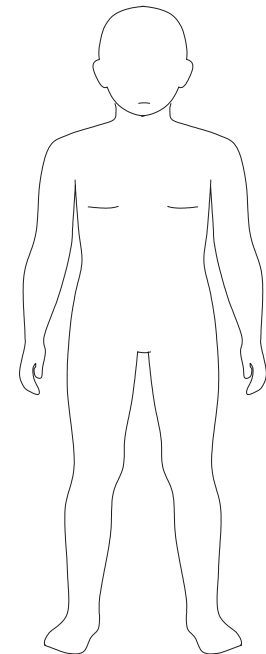
# girls' SIZE CHART



**SLIM (S)**  
Thin body and frame  
in relation to height



**REGULAR (R)**  
Average frame  
and proportions



**PLUS (+)**  
Fuller body in proportion  
to height

**REMEMBER! Start with height.**

**HEIGHT:** Child should stand in stocking feet, with feet shoulder width apart, back to a wall. Measure from the floor to the crown of head.

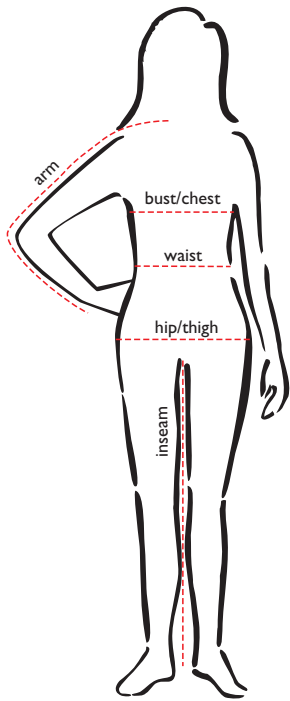
**WAIST:** Measure at natural waistline. Have the child bend to one side. Where the body curves is the natural waistline.

Toddler			
Size	2T	3T	4T
Height	33-35	36-38	39-41
Weight	27-29	30-33	34-38
Waist	20	20½	21

Little Girl (Slim, Reg)							
Size	Small		Medium			Large	
	4S	4R	5S	5R	6S	6R	6XS 6XR
Height	39-41		42-44		45-47		47-49
Weight	32-34	34-38	35-39	39-44	40-45	45-49	46-48 49-53
Waist	19½	21½	20	22	20½	22½	21 23

Big Girl (Slim, Reg, Plus)																		
Size	Small						Medium						Large			X-Large		
	7S	7R	7+	8 S	8R	8+	10S	10R	10+	12S	12R	12+	14S	14R	14+	16S	16R	16+
Height	48-50			51-53			54-57			57-59			60-61			62-63		
Weight	44-50	50-56	56-64	51-56	57-64	64-73	64-73	73-84	84-96	81-92	92-106	106-122	98-108	108-125	125-146	109-119	119-135	135-155
Waist	21½	23	27½	22	23½	28	23	24½	29	24	25½	30	25	26½	31	26	27½	32

# women's SIZE CHART



Women's Tops																						
	xx-small		x-small		small		medium		large		x-large		1X		2X		3X		4X		5X	
Size	00	0	2	4	6	8	10	12	14	16	18	20	16W	18W	20W	22W	24W	26W	28W	30W	32W	34W
bust/chest	31	32	33	34	35	36	37	38 ½	40	41 ½	43 ½	45 ½	43	45	47	49	51	53	55	57	59	61
arm (petite)	27 ¾	28	28 ¾	28 ¾	29 ½	29 ½	29 ¾	30 ¼	30 ¾	31	31 ¾	31 ¾	--	--	--	--	--	--	--	--	--	--
arm (regular)	28 ¾	29	29 ¾	29 ¾	30 ½	30 ½	30 ¾	31 ¼	31 ¾	32	32 ¾	32 ¾	--	--	--	--	--	--	--	--	--	--
arm (tall)	--	--	30 ¾	30 ¾	31 ½	31 ½	31 ¾	32 ¼	32 ¾	33	33 ¾	33 ¾	--	--	--	--	--	--	--	--	--	--
arm (women's)	--	--	--	--	--	--	--	--	--	--	--	--	31 ¾	32 ½	32 ½	32 ¾	33 ½	33 ¾	33 ¾	33 ¾	34 ½	34 ¾

Women's Bottoms																						
	xx-small		x-small		small		medium		large		x-large		1X		2X		3X		4X		5X	
Size	00	0	2	4	6	8	10	12	14	16	18	20	16W	18W	20W	22W	24W	26W	28W	30W	32W	34W
waist	24 to 25	25 to 26	26 to 27	27 to 28	28 to 29	29 to 30	30 to 31	31½ to 32½	33 to 34	34½ to 36	36½ to 38½	39 to 41	37 to 38	39 to 40	41 to 42	43 to 44	45 to 46	47 to 48	49 to 50½	51½ to 52½	53½ to 54½	55½ to 56½
hip/thigh	34	35	36	37	38	39	40	41 ½	43	44 ½	46 ½	48 ½	46	48	50	52	54	56	58 ½	60	61 ½	63

To measure accurately, keep the tape measure taut, but don't pull it tight. Get a friend to help, if possible. Measure over well-fitting undergarments.

**BUST/CHEST:** measure around fullest part of chest, keeping tape parallel to the floor.

**ARM:** with hand on hip, measure from center back at neck, across shoulder, elbow, down to wrist bone.

**WAIST:** bend to side; measure where body curves – even if you wear your pants lower.

**HIPS:** with feet shoulder width apart, measure fullest part of hip/thigh area.

**INSEAM:** measure inside leg seam of pants from crotch to hem.

## Women's Regular, Petite, Tall or 18W-26W?

**Regular:** hips slightly larger than bust.

**Petite:** shorter in the torso. Shorter sleeves and body, narrower shoulders.

**Tall:** long torsos. Body length up 1-1/2" and sleeve length up 1" from Regular.

**Women's 18W-26W:** proportioned for fuller figures. 18W is 2" larger in the bust, waist and hip than 18 regular. Arm girths are larger; shoulder widths narrower.



## boys' and men's guide to a GREAT UNIFORM FIT

### ORDER THE RIGHT SIZE, FIRST TRY.

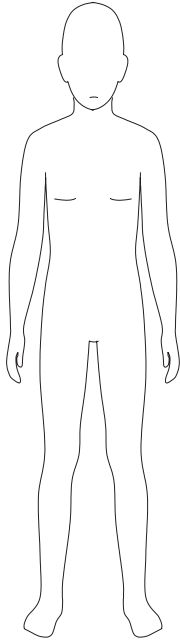
1. Kids grow fast, so measure your child every time you buy.
2. Remove bulky or heavy layers before measuring.
3. Begin with height, it's the best indicator to determine a child's size.
4. After height, a child's weight and/or waist measurement is the best gauge if your child needs an extended size (slim or plus).

### HOW DO I KNOW IF MY CHILD NEEDS AN EXTENDED SIZE?

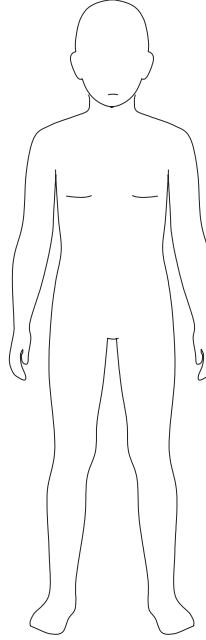
1. If you normally buy him a size 12 to fit his waist, but the inseam is always too long, he may need a 10 HUSKY (10H). Here's why: a 10H will give him extra room around his waist, yet has a shorter inseam, for a better overall fit in the waist and length.
2. If you normally buy him a size 12 to fit his waist, but the inseam is always too short, he may need a 14 Slim (14S). Here's why: a 14S is slimmer through the waist, yet has a longer inseam, for a better overall fit in waist and length.

LANDS' END SCHOOL

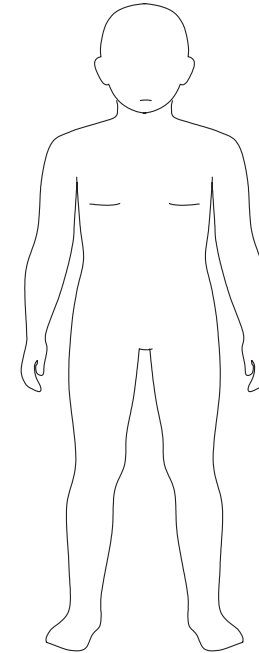
# boys' SIZE CHART



**SLIM (S)**  
Thin body and frame  
in relation to height



**REGULAR (R)**  
Average frame  
and proportions



**HUSKY (H)**  
Fuller body in proportion  
to height

**REMEMBER!** Start with height.

**HEIGHT:** Child should stand in stocking feet, with feet shoulder width apart, back to a wall. Measure from the floor to the crown of head.

**WAIST:** Measure at natural waistline. Have the child bend to one side. Where the body curves is the natural waistline.

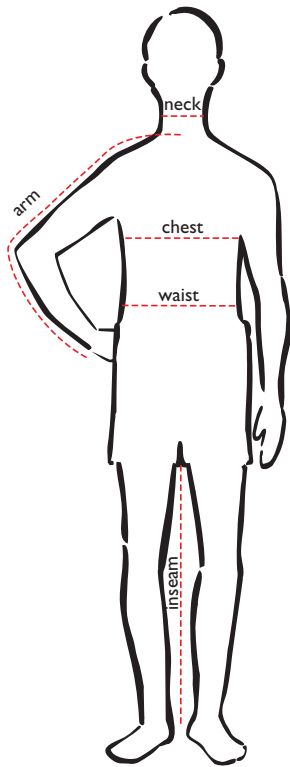
Toddler			
Size	2T	3T	4T
Height	33-35	36-38	39-41
Weight	27-29	30-33	34-38
Waist	20	20½	21

Little Boy (Slim, Reg)								
Size	Small		Medium			Large		
	4S	4R	5S	5R	6S	6R	7S	7R
Height	39-41		42-44		45-47		48-50	
Weight	32-34	34-38	35-39	39-44	40-45	45-49	49-50	50-56
Waist	19½	21½	20	22	20½	22½	21	23

Big Boy (Slim, Reg, Husky)										
Size	Small			Medium						
	8S	8R	8H	10S	10R	10H	12S	12R	12H	
Height	51-53			54-57			58-61			
Weight	52-56	56-64	64-72	62-70	70-80	80-92	78-90	90-102	102-118	
Waist	21½	23½	26½	22½	24½	27½	23½	25½	28½	

Big Boy (Slim, Reg, Husky)												
Size	Large						X-Large					
	14S	14R	14H	16S	16R	16H	18S	18R	18H	20S	20R	20H
Height	62-63			64-65			66-67			68-70		
Weight	95-102	112-128	128-146	120-134	134-152	152-162	134-148	148-166	164-172	140-156	156-174	174-196
Waist	24½	26½	29½	26	28	31	27	29	32	28	30	33

# men's SIZE CHART



Men's																		
	small		medium		large		x-large		xx-large		2XL		3XL		4XL		5XL	
neck	14	14 ¼	15	15½	16	16 ½	17	17 ½	18	18 ½	18	18 ½	19	19 ½	20	20 ½	21	21 ½
chest	34	36	38	40	42	44	46	48	50	52	50	52	54	56	58	60	62	64
arm (regular)	32 ½	33	33 ½	34	34 ½	35	35 ½	36	36 ½	36 ½	35	35 ½	36	36 ½	37	37 ½	38	38 ½
arm (tall)	34	34 ½	35	35 ½	36	36 ½	37	37 ½	38	38	36 ½	37	37 ½	38	38 ½	39	39 ½	40
waist (regular)	28	30	32	34	36	38	40	42	44	46	48	48	50	52	54	56	58	60
hips	34	36	38	40	42	44	45 ½	47	48 ½	50	51 ¾		53 ½	54 ¾	55 ¼	55 ¾	56 ¼	56 ¾

To measure accurately, keep the tape measure taut, but don't pull it tight. Get a friend to help, if possible. Measure over well-fitting undergarments.

**CHEST:** measure around fullest part of chest, keeping tape parallel to the floor.

**ARM:** with hand on hip, measure from center back at neck, across shoulder, elbow, down to wrist bone.

**WAIST:** bend to side; measure where body curves – even if you wear your pants lower.

**HIPS:** with feet shoulder width apart, measure fullest part of hip/thigh area.

**INSEAM:** measure inside leg seam of pants from crotch to hem.

## Men's Regular, Tall or Big?

**Regular:** hips and chest of equal girth.

**Tall (or Long):** long torso. Body of shirts is 1-1/2" to 2" longer than Regular. Coat sleeve and body length is 1-1/2" longer.

**Big:** average torso length, just larger overall. Pockets and other details increase in size for a pleasing proportion.