



LANDS' END SCHOOL

St. Luke School
318 11th Street
Columbus, GA 31901
Preferred School Number: 900090762

Welcome to Lands' End School!

Guaranteed. Period.®

If you're not satisfied with any item, return it to us at any time for an exchange or refund of its purchase price.

Pass-along quality.

We're serious about comfort, construction and durability. So our products hold up from the first day of school to the last. (And through the next kid in line.)

Shop by dress code online. Preferred Schools can view their dress code online to make ordering even easier.

3% cash back.

Preferred Schools earn 3% cash back on all uniform purchases. It's easy and free to sign up – visit landsend.com/school

Sizes for grades pre-K to 12.

We offer a great selection of Slim, Plus and Husky sizes for boys and girls.



1-800-469-2222

landsend.com/school

LANDS' END SCHOOL

All prices in U.S. dollars. Prices subject to change.
©Copyright 2009, Lands' End, Inc. All rights reserved.



LOGO # 0353363K, School Name/Lion Head, \$8.10

- Your school has provided this logo and set certain restrictions regarding its use. Please check each individual product in your Dress Code for details
- Personalized monograms are allowed with this logo
- Logo and fabric shown are for display purposes only
- Actual embroidery thread colors may vary



LOGO # 0353364K, School Name with Steeple, \$5.50

- Your school has provided this logo and set certain restrictions regarding its use. Please check each individual product in your Dress Code for details
- Personalized monograms are allowed with this logo
- Logo and fabric shown are for display purposes only
- Actual embroidery thread colors may vary



Short Sleeve Solid Performance Mesh Polo



Approved colors:

cobalt, red, white

Cobalt only allowed for Grades 6-8

**Logo #0353364K is mandatory
No monogram allowed**

Prices include logo

| | | |
|------------|----------------|---------|
| 051465-BQ8 | TOTS 2T-4T | \$21.00 |
| 051467-BQ7 | LITTLE Kid S-L | \$21.00 |
| 051469-BQ6 | Kid S-XL | \$21.00 |
| 167541-BQ6 | MEN S-XXL | \$25.00 |

- Soft, 100% cotton mesh
- Resists shrinkage, fading and pilling
- Stains wash out easier

Long Sleeve Solid Performance Mesh Polo



Approved colors:

cobalt, red, white

Cobalt only allowed for Grades 6-8

**Logo #0353364K is mandatory
No monogram allowed**

Prices include logo

| | | |
|------------|----------------|---------|
| 051422-BQX | TOTS 2T-4T | \$23.00 |
| 051437-BQ6 | LITTLE Kid S-L | \$23.00 |
| 051438-BQ0 | Kid S-XL | \$23.00 |
| 167539-BQ9 | MEN S-XXL | \$30.50 |
| 315251-BQ1 | MEN TALL M-XXL | \$35.50 |

- Soft, 100% cotton mesh
- Resists shrinkage, fading and pilling
- Stains wash out easier

Short Sleeve Solid Performance Interlock Polo



Approved colors:

cobalt, red, white

Cobalt only allowed for Grades 6-8

**Logo #0353364K is mandatory
No monogram allowed**

Prices include logo

| | | |
|------------|----------------|---------|
| 051377-BQ8 | LITTLE Kid S-L | \$21.00 |
| 051402-BQ2 | Kid S-XL | \$21.00 |
| 313701-BQ3 | MEN S-XL | \$30.50 |

- Soft, 100% cotton interlock
- Won't shrink out of fit
- Won't pill or fade, wash after wash
- Stains wash out easier



Long Sleeve Solid Performance Interlock Polo



Approved colors:

cobalt, red, white

Cobalt only allowed for Grades 6-8

**Logo #0353364K is mandatory
No monogram allowed**

Prices include logo

| | | |
|------------|----------------|---------|
| 051356-BQ6 | LITTLE Kid S-L | \$23.00 |
| 051369-BQ3 | Kid S-XL | \$23.00 |
| 313700-BQ9 | MEN S-XL | \$35.50 |

- Soft, 100% cotton interlock
- Won't shrink out of fit
- Won't pill or fade, wash after wash
- Stains wash out easier

Short Sleeve Solid 60/40 Oxford Shirt



Approved colors:

white

**Logo #0353364K is mandatory
No monogram allowed**

Prices include logo

| | | |
|------------|----------------|---------|
| 219302-BQ9 | LITTLE Boy 4-7 | \$23.00 |
| 219304-BQ8 | Boy 8-20 | \$23.00 |
| 219305-BQ2 | Boy Husky 8-20 | \$23.00 |
| 029414-BQ7 | MEN S-XXL | \$28.00 |

- Easy-care 60% cotton/40% polyester blend
- Back yoke and box pleat for easy reaches
- Finely stitched double-needle seams

Long Sleeve Solid 60/40 Oxford Shirt



Approved colors:

white

**Logo #0353364K is mandatory
No monogram allowed**

Prices include logo

| | | |
|------------|----------------|---------|
| 219315-BQ6 | LITTLE Boy 4-7 | \$25.00 |
| 219308-BQ6 | Boy 8-20 | \$25.00 |
| 219312-BQ2 | Boy Husky 8-20 | \$25.00 |
| 029413-BQ2 | MEN S-XXL | \$30.00 |

- Easy-care 60% cotton/40% polyester blend
- Back yoke and box pleat for easy reaches
- Finely stitched double-needle seams



Short Sleeve No Iron Pinpoint Shirt



Approved colors:

white

Logo #0353364K is mandatory
No monogram allowed

Prices include logo

| | | |
|------------|----------------|---------|
| 315354-BQ8 | LITTLE BOY 4-7 | \$35.00 |
| 315355-BQ2 | BOY 8-20 | \$35.00 |
| 315356-BQ7 | MEN S-XL | \$43.50 |

- 100% no-iron cotton
- Back yoke and box pleat for easy reaches
- Finely stitched double-needle seams

Long Sleeve No Iron Pinpoint Shirt



Approved colors:

white

Logo #0353364K is mandatory
No monogram allowed

Prices include logo

| | | |
|------------|----------------|---------|
| 219319-BQ4 | LITTLE BOY 4-7 | \$40.50 |
| 219320-BQ7 | BOY 8-20 | \$40.50 |
| 322776-BQ0 | MEN S-XL | \$45.00 |

- 100% no-iron cotton
- Back yoke and box pleat for easy reaches
- Finely stitched double-needle seams

Button Front Drifter Cardigan



Approved colors:

red, white

Logo is mandatory
Choose logo #0353363K or logo #0353364K

For logo #0353363K add \$8.10 per item
For logo #0353364K add \$5.50 per item

| | | |
|------------|----------------|---------|
| 315289-BQ9 | LITTLE Kid S-L | \$40.50 |
| 315296-BQ9 | KIDS S-XL | \$40.50 |
| 315298-BQ8 | MEN S-XL | \$45.00 |

- Soft-as-can-be 100% cotton for all-day comfort
- Bulk-free fit under the arms
- V-neck makes it perfect for layering
- Shape-keeping rib-knit cuffs and hem



Drifter Zip Cardigan



Approved colors:

red, white

Logo is mandatory

Choose logo #0353363K or logo #0353364K

For logo #0353363K add \$8.10 per item

For logo #0353364K add \$5.50 per item

| | | |
|------------|----------------|---------|
| 223021-BQ3 | LITTLE Kid S-L | \$35.00 |
| 223023-BQ2 | Kid S-XL | \$35.00 |
| 223025-BQ1 | MEN S-XXL | \$39.50 |

- Soft-as-can-be 100% cotton for all-day comfort
- Knit to eliminate excess bulk under the arms
- Full-zip front with easy grosgrain zipper pull

Drifter Crew Sweater



Approved colors:

red, white

Logo is mandatory

Choose logo #0353363K or logo #0353364K

For logo #0353363K add \$8.10 per item

For logo #0353364K add \$5.50 per item

| | | |
|------------|----------------|---------|
| 223003-BQ5 | LITTLE Kid S-L | \$29.50 |
| 223004-BQX | Kids S-XL | \$29.50 |
| 223006-BQ9 | MEN S-XL | \$35.00 |
| 315272-BQ3 | MEN TALL M-XXL | \$39.50 |

- Soft-as-can-be cotton for all-day comfort
- Fully fashioned for a better, more comfortable fit
- Raglan sleeves
- Shape-keeping rib trim

Drifter V-neck Sweater



Approved colors:

red, white

Logo is mandatory

Choose logo #0353363K or logo #0353364K

For logo #0353363K add \$8.10 per item

For logo #0353364K add \$5.50 per item

| | | |
|------------|----------------|---------|
| 223008-BQ8 | LITTLE Kid S-L | \$29.50 |
| 223010-BQ5 | Kids S-XL | \$29.50 |
| 223013-BQ9 | MEN S-XL | \$35.00 |

- Soft-as-can-be 100% cotton for all-day comfort
- Bulk-free fit under the arms
- V-neck makes it perfect for layering
- Shape-keeping rib-knit cuffs and hem



Drifter Sweater Vest



Approved colors:

red

Logo is mandatory

Choose logo #0353363K or logo #0353364K

For logo #0353363K add \$8.10 per item

For logo #0353364K add \$5.50 per item

| | | |
|------------|----------------|---------|
| 223014-BQ3 | LITTLE Kid S-L | \$25.00 |
| 223015-BQ8 | Kids S-XL | \$25.00 |
| 223018-BQ1 | MEN S-XL | \$29.50 |

- Soft-as-can-be cotton for all-day comfort
- Rib-knit trim keeps its shape wash after wash
- Adds a fresh look to any outfit

Plain Front Chino Pants



Approved colors:

khaki

Logo is not allowed

| | | |
|------------|---------------------------|---------|
| 191125-BQ8 | LITTLE BOY 4-7 | \$25.50 |
| 191126-BQ2 | LITTLE BOY SLIM 4-7 | \$25.50 |
| 191127-BQ7 | BOY 8-20 | \$25.50 |
| 191128-BQ1 | BOY SLIM 8-20 | \$25.50 |
| 191129-BQ6 | BOY HUSKY 8-20 | \$25.50 |
| 191130-BQ9 | MEN 30-44 EVEN, 31-37 ODD | \$32.50 |

- Easy-care 60% polyester/40% cotton blend
- Reinforced pockets front and back
- Neat plain-front styling
- Little Boy has a back-elastic waist/snap closure
- Boy has a traditional waist/button closure

Plain Front Stain/Wrinkle Resistant Chinos



Approved colors:

khaki

Logo is not allowed

| | | |
|------------|---------------------------|---------|
| 252118-BQ5 | Tots 2T-4T | \$25.50 |
| 243847-BQ1 | LITTLE BOY 4-7 | \$25.50 |
| 243848-BQ6 | LITTLE BOY SLIM 4-7 | \$25.00 |
| 178254-BQ8 | BOY 8-20 | \$25.50 |
| 190515-BQ3 | BOY SLIM 8-20 | \$25.50 |
| 178255-BQ2 | BOY HUSKY 8-20 | \$25.50 |
| 243850-BQ3 | MEN 30-44 EVEN, 31-37 ODD | \$32.50 |

- Soft 100% cotton
- Resists wrinkles, spills and stains
- Hidden adjustable waist provides a better fit
- Tots/Little Boy has back-elastic waist/snap closure
- Boy has a traditional waist/button closure
- Pre-hemmed



Pleated Front Blend Chino Pants



Approved colors:

khaki

Logo is not allowed

| | | |
|------------|---------------------------|---------|
| 231061-BQ5 | LITTLE BOY 4-7 | \$25.50 |
| 231062-BQX | LITTLE BOY SLIM 4-7 | \$25.50 |
| 231063-BQ4 | BOY 8-20 | \$25.50 |
| 231064-BQ9 | BOY SLIM 8-20 | \$25.50 |
| 231065-BQ3 | BOY HUSKY 8-20 | \$25.50 |
| 231066-BQ8 | MEN 30-44 EVEN, 31-37 ODD | \$32.50 |

- Easy-care 60% polyester/40% cotton blend
- Reinforced pockets front and back
- Little Boy has back-elastic waist/snap closure
- Boy has a traditional waist/button closure

Pleated Front Stain/Wrinkle Resistant Chino Pants



Approved colors:

khaki

Logo is not allowed

| | | |
|------------|---------------------|---------|
| 252123-BQ6 | TOTS 2T-4T | \$25.50 |
| 243851-BQ8 | LITTLE BOY 4-7 | \$25.50 |
| 243852-BQ2 | LITTLE BOY SLIM 4-7 | \$25.50 |
| 178435-BQ0 | BOY 8-20 | \$25.50 |
| 178439-BQ9 | BOY SLIM 8-20 | \$25.50 |
| 178437-BQX | BOY HUSKY 8-20 | \$25.50 |

- Soft 100% cotton
- Resists wrinkles, spills and stains
- Hidden adjustable waist provides a better fit
- Tots/Little Boy have back-elastic waist/snap closure
- Boy has a traditional waist/button closure
- Pre-hemmed

Pleated Front Reinforced Knee Blend Chinos



Approved colors:

khaki

Logo is not allowed

| | | |
|------------|---------------------|---------|
| 231067-BQ2 | LITTLE BOY 4-7 | \$25.50 |
| 231068-BQ7 | LITTLE BOY SLIM 4-7 | \$25.50 |
| 231069-BQ1 | BOY 8-20 | \$25.50 |
| 231070-BQ4 | BOY SLIM 8-20 | \$25.50 |
| 231071-BQ9 | BOY HUSKY 8-20 | \$25.50 |

- Easy-care 60% cotton/40% polyester blend
- Hidden adjustable waist for a better fit
- Extra layer of interlining resists roughhousing
- Little Boy has back-elastic waist/snap closure
- Boy has a traditional waist/button closure



Blended Elastic Waist Chino Pants



Approved colors:

khaki

Logo is not allowed

| | | |
|------------|---------------------------|---------|
| 092511-BQX | LITTLE BOY 4-7 | \$25.50 |
| 092513-BQ9 | BOY 8-20 | \$25.50 |
| 092515-BQ8 | BOY HUSKY 8-20 | \$25.50 |
| 092516-BQ2 | MEN 30-44 EVEN, 31-37 Odd | \$32.50 |

- 60% cotton/40% polyester
- Comfortable elastic waist
- Carefree - just toss in the wash

Pleated Front Blend Chino Shorts



Approved colors:

khaki

Logo is not allowed

| | | |
|------------|---------------------------|---------|
| 231149-BQ7 | LITTLE BOY 4-7 | \$19.50 |
| 231151-BQ4 | LITTLE BOY SLIM 4-7 | \$19.50 |
| 231152-BQ9 | BOY 8-20 | \$19.50 |
| 231154-BQ8 | BOY SLIM 8-20 | \$19.50 |
| 231155-BQ2 | BOY HUSKY 8-20 | \$19.50 |
| 231156-BQ7 | MEN 30-44 EVEN, 31-37 Odd | \$25.00 |

- Easy care 60% polyester/40% cotton
- Touch of elastic-waist ease
- Handy side pockets

80/20 Fleece Crew Sweatshirt



Approved colors:

red

Logo is mandatory

Choose logo #0353363K or logo #0353364K

For logo #0353363K add \$8.10 per item

For logo #0353364K add \$5.50 per item

| | | |
|------------|----------------|---------|
| 316240-BQ5 | TOTS 2T-4T | \$15.50 |
| 306542-BQ1 | LITTLE KID S-L | \$15.50 |
| 306544-BQ0 | KID S-XL | \$15.50 |
| 219474-BQ6 | MEN S-XXL | \$19.50 |

- Heavy on the cottony softness, just enough polyester sturdiness
- Garment washing says, "bye-bye" to shrinkage
- Reinforced shoulders stand up to tugging and toddling
- Sag-resistant rib-knit neck, cuffs and bottom



80/20 Hoodie Pullover



Approved colors:

red

Logo is mandatory

Choose logo #0353363K or logo #0353364K

For logo #0353363K add \$8.10 per item

For logo #0353364K add \$5.50 per item

| | | |
|------------|----------------|---------|
| 316232-BQ0 | LITTLE Kid S-L | \$19.50 |
| 316234-BQX | Kid S-XL | \$19.50 |
| 316236-BQ9 | MEN S-XL | \$29.50 |

- Soft and durable cotton-rich blend
- Prewashed to maximize softness, minimize shrinkage
- Shape-keeping rib-knit trim
- Large kangaroo pocket for warming hands

Solid Zip Hooded Sweatshirt



Approved colors:

red

Logo is mandatory

Choose logo #0353363K or logo #0353364K

For logo #0353363K add \$8.10 per item

For logo #0353364K add \$5.50 per item

| | | |
|------------|----------------|---------|
| 252116-BQ6 | LITTLE Kid S-L | \$25.00 |
| 252117-BQ0 | Kid S-XL | \$25.00 |
| 219540-BQX | MEN S-XXL | \$29.50 |

- 80% cotton/20% polyester
- Soft, comfy blend keeps its shape
- Jersey-lined hood eliminates static
- Rib knit cuffs, bottom and side panels
- Full-zip front

Polar Fleece Jacket



Approved colors:

red

Logo is mandatory

Choose logo #0353363K or logo #0353364K

For logo #0353363K add \$8.10 per item

For logo #0353364K add \$5.50 per item

| | | |
|------------|----------------|---------|
| 188727-BQ5 | LITTLE Kid S-L | \$29.50 |
| 188726-BQ0 | Kids S-XL | \$29.50 |
| 188725-BQ6 | MEN S-XXL | \$35.00 |

- Double-sided fleece holds out chills
- Improved fabric reduces pilling
- Full-zip front
- Two zip pockets



Polar Fleece Vest



Approved colors:

red

Logo is mandatory

Choose logo #0353363K or logo #0353364K

For logo #0353363K add \$8.10 per item

For logo #0353364K add \$5.50 per item

| | | |
|------------|----------------|---------|
| 188731-BQ1 | LITTLE Kid S-L | \$29.50 |
| 188730-BQ7 | Kids S-XL | \$29.50 |
| 188729-BQ4 | MEN S-XXL | \$35.00 |

- Double-sided fleece holds out chills
- Improved fabric reduces pilling
- Full-zip front
- Two zip pockets

Micro-Fleece Half-Zip Pullover



Approved colors:

red

Logo is mandatory

Choose logo #0353363K or logo #0353364K

For logo #0353363K add \$8.10 per item

For logo #0353364K add \$5.50 per item

| | | |
|------------|----------------|---------|
| 315366-BQ0 | LITTLE Kid S-L | \$19.50 |
| 315368-BQX | Kid S-XL | \$19.50 |

- Lightweight microfleece adds warmth not weight
- Partial-zip front for easy overhead dressing
- Antipilling finish keeps it looking neat

Fleece Hoodie



Approved colors:

red

Logo is mandatory

Choose logo #0353363K or logo #0353364K

For logo #0353363K add \$8.10 per item

For logo #0353364K add \$5.50 per item

| | | |
|------------|----------------|---------|
| 383657-BQ8 | LITTLE Kid S-L | \$34.50 |
| 383658-BQ2 | Kid S-XL | \$34.50 |

- Full-zip front for easy on/off
- Zippered pockets for storage or warming hands
- Soft polyester fleece
- Received Preferred School contribution with purchase



Short Sleeve Solid Performance Mesh Polo



Approved colors:

cobalt, red, white

Cobalt only allowed for Grades 6-8

**Logo #0353364K is mandatory
No monogram allowed**

Prices include logo

| | | |
|------------|----------------|---------|
| 051465-BQ8 | TOTS 2T-4T | \$21.00 |
| 051467-BQ7 | LITTLE Kid S-L | \$21.00 |
| 051469-BQ6 | Kid S-XL | \$21.00 |
| 167542-BQ0 | WOMEN S-XL | \$25.00 |

- Soft, 100% cotton mesh
- Resists shrinkage, fading and pilling
- Stains wash out easier

Long Sleeve Solid Performance Mesh Polo



Approved colors:

cobalt, red, white

Cobalt only allowed for Grades 6-8

**Logo #0353364K is mandatory
No monogram allowed**

Prices include logo

| | | |
|------------|----------------|---------|
| 051422-BQX | TOTS 2T-4T | \$23.00 |
| 051437-BQ6 | LITTLE Kid S-L | \$23.00 |
| 051438-BQ0 | Kid S-XL | \$23.00 |
| 167540-BQ1 | WOMEN S-XL | \$30.50 |

- Soft, 100% cotton mesh
- Resists shrinkage, fading and pilling
- Stains wash out easier

Short Sleeve Feminine Fit Mesh Polo



Approved colors:

cobalt, red, white

Cobalt only allowed for Grades 6-8

**Logo #0353364K is mandatory
No monogram allowed**

Prices include logo

| | | |
|------------|------------------|---------|
| 230948-BQ2 | LITTLE GIRL S-L | \$21.00 |
| 230949-BQ7 | GIRL S-XL | \$21.00 |
| 230950-BQX | WOMEN XS-XL | \$25.00 |
| 315253-BQ0 | WOMEN PLUS 1X-3X | \$30.50 |

- 100% cotton
- Soft, mesh fabric keeps her cool
- Gently shaped side seams are more flattering
- Enhanced fabric keeps colors true
- Resists stains and shrinkage
- Top-of-hip length with side vents



Long Sleeve Mesh Feminine Fit Polo



Approved colors:

cobalt, red, white

Cobalt only allowed for Grades 6-8

**Logo #0353364K is mandatory
No monogram allowed**

Prices include logo

| | | |
|------------|------------------|---------|
| 230951-BQ4 | LITTLE GIRL S-L | \$23.00 |
| 230952-BQ9 | GIRL S-XL | \$23.00 |
| 230953-BQ3 | WOMEN XS-XL | \$30.50 |
| 315261-BQ5 | WOMEN PLUS 1X-3X | \$35.50 |

- 100% cotton
- Soft, mesh fabric keeps her cool
- Gently shaped side seams are more flattering
- Enhanced fabric keeps colors true
- Resists stains and shrinkage
- Top-of-hip length with side vents

Short Sleeve Solid Performance Interlock Polo



Approved colors:

cobalt, red, white

Cobalt only allowed for Grades 6-8

**Logo #0353364K is mandatory
No monogram allowed**

Prices include logo

| | | |
|------------|----------------|---------|
| 051377-BQ8 | LITTLE Kid S-L | \$21.00 |
| 051402-BQ2 | Kid S-XL | \$21.00 |
| 313702-BQ8 | WOMEN S-XL | \$30.50 |

- Soft, 100% cotton interlock
- Won't shrink out of fit
- Won't pill or fade, wash after wash
- Stains wash out easier

Long Sleeve Solid Performance Interlock Polo



Approved colors:

cobalt, red, white

Cobalt only allowed for Grades 6-8

**Logo #0353364K is mandatory
No monogram allowed**

Prices include logo

| | | |
|------------|----------------|---------|
| 051356-BQ6 | LITTLE Kid S-L | \$23.00 |
| 051369-BQ3 | Kid S-XL | \$23.00 |
| 313699-BQX | WOMEN S-XL | \$35.50 |

- Soft, 100% cotton interlock
- Won't shrink out of fit
- Won't pill or fade, wash after wash
- Stains wash out easier



Short Sleeve Interlock Feminine Fit Polo



Approved colors:

cobalt, red, white

Cobalt only allowed for Grades 6-8

**Logo #0353364K is mandatory
No monogram allowed**

Prices include logo

| | | |
|------------|------------------|---------|
| 230954-BQ8 | LITTLE GIRL S-L | \$21.00 |
| 230955-BQ2 | GIRL S-XL | \$21.00 |
| 230956-BQ7 | WOMEN S-XL | \$30.50 |
| 315263-BQ4 | WOMEN PLUS 1X-3X | \$35.50 |

- Plush 100% cotton
- Resists fading/stains
- Top-of-hip length with side vents
- Sized to allow for shrinkage, please wash before wear

Long Sleeve Interlock Feminine Fit Polo



Approved colors:

cobalt, red, white

Cobalt only allowed for Grades 6-8

**Logo #0353364K is mandatory
No monogram allowed**

Prices include logo

| | | |
|------------|------------------|---------|
| 230957-BQ1 | LITTLE GIRL S-L | \$23.00 |
| 230958-BQ6 | GIRL S-XL | \$23.00 |
| 230959-BQ0 | WOMEN S-XL | \$35.50 |
| 315269-BQ1 | WOMEN PLUS 1X-3X | \$40.50 |

- Plush 100% cotton
- Resists fading/stains
- Top-of-hip length with side vents
- Sized to allow for shrinkage, please wash before wear

Short Sleeve Oxford Shirt



Approved colors:

white

**Logo #0353364K is mandatory
No monogram allowed**

Prices include logo

| | | |
|------------|-------------------|---------|
| 219321-BQ1 | LITTLE GIRL 4-6X | \$23.50 |
| 219322-BQ6 | GIRL 7, 8-16 EVEN | \$23.50 |
| 284295-BQX | WOMEN XS-XL | \$30.00 |
| 315308-BQ8 | WOMEN PLUS 1X-3X | \$33.50 |

- 60% cotton/40% polyester fabric foils wrinkles
- Breathable easy care fabric
- Feminine fit



Long Sleeve Oxford Shirt



Approved colors:

white

**Logo #0353364K is mandatory
No monogram allowed**

Prices include logo

| | | |
|------------|-------------------|---------|
| 219323-BQ0 | LITTLE GIRL 4-6X | \$25.00 |
| 219324-BQ5 | GIRL 7, 8-16 EVEN | \$25.00 |
| 284294-BQ5 | WOMEN XS-XL | \$30.50 |
| 315311-BQX | WOMEN PLUS 1X-3X | \$35.00 |

- 60% cotton/40% polyester fabric foils wrinkles
- Breathable easy care fabric
- Feminine fit

Long Sleeve No Iron Pinpoint Shirt



Approved colors:

white

**Logo #0353364K is mandatory
No monogram allowed**

Prices include logo

| | | |
|------------|-------------------|---------|
| 315320-BQ9 | LITTLE GIRL 4-6X | \$40.50 |
| 315328-BQ5 | GIRL 7, 8-16 EVEN | \$40.50 |
| 315329-BQX | WOMEN S-XL | \$50.50 |

- 100% cotton
- Wrinkle-free for 50 washes
- Neatly finished placket
- 2-button cuffs
- Looks crisp all day long

Short Sleeve Peter Pan Knit Top



Approved colors:

white

**Logo #0353364K is mandatory if wearing skirt
Logo is optional if wearing jumper**

For logo #0353364K add \$5.50 per item

| | | |
|------------|-----------------|---------|
| 350062-BQ9 | LITTLE GIRL S-L | \$18.50 |
| 350064-BQ8 | GIRL S-XL | \$18.50 |
| 350067-BQ1 | WOMEN S-XL | \$22.50 |

- Soft 100% cotton
- Neat Peter Pan collar
- Covered neck seam feels smooth
- Straight hem, top-of-hip length



Long Sleeve Peter Pan Knit Top



Approved colors:

white

Logo #0353364K is mandatory if wearing skirt

Logo is optional if wearing jumper

For logo #0353364K add \$5.50 per item

| | | |
|------------|-----------------|---------|
| 350068-BQ6 | LITTLE GIRL S-L | \$22.50 |
| 350071-BQ8 | GIRL S-XL | \$22.50 |
| 350072-BQ2 | WOMEN S-XL | \$24.50 |

- Soft 100% cotton
- Neat Peter Pan collar
- Covered neck seam feels smooth
- Straight hem, top-of-hip length

Short Sleeve Plain Collar Peter Pan Woven Shirt



Approved colors:

white

Logo #0353364K is mandatory if wearing skirt

Logo is optional if wearing jumper

For logo #0353364K add \$5.50 per item

| | | |
|------------|-------------------|---------|
| 315313-BQ9 | LITTLE GIRL 4-6X | \$20.00 |
| 315315-BQ8 | GIRL 7, 8-16 EVEN | \$20.00 |
| 315317-BQ7 | WOMEN S-XL | \$25.50 |

- Easy-care 60% cotton/40% polyester oxford blend
- Neat Peter Pan collar
- Covered neck seam feels smooth

Long Sleeve Plain Collar Peter Pan Woven Shirt



Approved colors:

white

Logo #0353364K is mandatory if wearing skirt

Logo is optional if wearing jumper

For logo #0353364K add \$5.50 per item

| | | |
|------------|------------------------|---------|
| 306147-BQ3 | LITTLE GIRL 4-6X | \$24.50 |
| 306148-BQ8 | GIRL 7, 8-16 EVEN | \$24.50 |
| 306150-BQ5 | GIRL PLUS 7, 8-16 EVEN | \$24.50 |
| 322467-BQ3 | WOMEN S-XL | \$27.50 |

- Easy-care 60% cotton/40% polyester oxford blend
- Neat Peter Pan collar
- Covered neck seam feels smooth



Short Sleeve Ruffled Collar Peter Pan Knit Top



Approved colors:

white

Logo #0353364K is mandatory if wearing skirt

Logo is optional if wearing jumper

For logo #0353364K add \$5.50 per item

| | | |
|------------|-----------------|---------|
| 255159-BQX | LITTLE GIRL S-L | \$18.50 |
| 255160-BQ2 | GIRL S-XL | \$18.50 |

- Cushy soft 100% combed-cotton knit
- Delicate ruffles and two-button placket
- Looks finished tucked in or out
- Top-of-the-hip length

Long Sleeve Ruffled Collar Peter Pan Knit Top



Approved colors:

white

Logo #0353364K is mandatory if wearing skirt

Logo is optional if wearing jumper

For logo #0353364K add \$5.50 per item

| | | |
|------------|-----------------|---------|
| 230938-BQ9 | LITTLE GIRL S-L | \$22.50 |
| 230939-BQ3 | GIRL S-XL | \$22.50 |

- Cushy soft 100% combed-cotton knit
- Delicate ruffles and two-button placket
- Looks finished tucked in or out
- Top-of-the-hip length

Short Sleeve Ruffled Collar Peter Pan Woven Blouse



Approved colors:

white

Logo #0353364K is mandatory if wearing skirt

Logo is optional if wearing jumper

For logo #0353364K add \$5.50 per item

| | | |
|------------|-------------------|---------|
| 252068-BQ0 | LITTLE GIRL 4-6X | \$25.00 |
| 252069-BQ5 | GIRL 7, 8-16 EVEN | \$25.00 |

- Smooth, soft 65% cotton/35% polyester fabric
- Ruffles on collar



Long Sleeve Ruffled Collar Peter Pan Woven Blouse



Approved colors:

white

Logo #0353364K is mandatory if wearing skirt

Logo is optional if wearing jumper

For logo #0353364K add \$5.50 per item

| | | |
|------------|------------------------|---------|
| 219536-BQ3 | LITTLE GIRL 4-6X | \$24.50 |
| 219537-BQ8 | GIRL 7, 8-16 EVEN | \$24.50 |
| 219538-BQ2 | GIRL PLUS 7, 8-16 EVEN | \$24.50 |

- Smooth, soft 65% cotton/35% polyester fabric
- Ruffles on collar and cuffs
- Perfect for layering or going solo

Long Sleeve Knit Button Front Peter Pan Blouse



Approved colors:

white

Logo #0353364K is mandatory if wearing skirt

Logo is optional if wearing jumper

For logo #0353364K add \$5.50 per item

| | | |
|------------|-----------------|---------|
| 320029-BQ3 | LITTLE GIRL S-L | \$25.00 |
| 320030-BQ6 | GIRL S-XL | \$25.00 |

- Pampering 100% cotton
- Peter Pan collar with ruffles
- Full-button front
- Goes layered or solo

Button Front Drifter Cardigan



Approved colors:

red, white

Logo is mandatory

Choose logo #0353363K or logo #0353364K

For logo #0353363K add \$8.10 per item

For logo #0353364K add \$5.50 per item

| | | |
|------------|----------------|---------|
| 315289-BQ9 | LITTLE Kid S-L | \$35.00 |
| 315296-BQ9 | Kids S-XL | \$35.00 |
| 315299-BQ2 | WOMEN S-XL | \$39.50 |

- Soft-as-can-be 100% cotton for all-day comfort
- Bulk-free fit under the arms
- V-neck makes it perfect for layering
- Shape-keeping rib-knit cuffs and hem



Drifter Zip Cardigan



Approved colors:

red, white

Logo is mandatory

Choose logo #0353363K or logo #0353364K

For logo #0353363K add \$8.10 per item

For logo #0353364K add \$5.50 per item

| | | |
|------------|------------------|---------|
| 223021-BQ3 | LITTLE Kid S-L | \$35.00 |
| 223023-BQ2 | Kid S-XL | \$35.00 |
| 223024-BQ7 | WOMEN S-XL | \$39.50 |
| 315280-BQ8 | WOMEN PLUS 1X-3X | \$44.50 |

- Soft-as-can-be 100% cotton for all-day comfort
- Knit to eliminate excess bulk under the arms
- Full-zip front with easy grosgrain zipper pull

Drifter Crew Sweater



Approved colors:

red, white

Logo is mandatory

Choose logo #0353363K or logo #0353364K

For logo #0353363K add \$8.10 per item

For logo #0353364K add \$5.50 per item

| | | |
|------------|----------------|---------|
| 223003-BQ5 | LITTLE Kid S-L | \$29.50 |
| 223004-BQX | Kids S-XL | \$29.50 |
| 223005-BQ4 | WOMEN S-XL | \$35.00 |

- Soft-as-can-be cotton for all-day comfort
- Fully fashioned for a better, more comfortable fit
- Raglan sleeves
- Shape-keeping rib trim

Drifter V-neck Sweater



Approved colors:

red, white

Logo is mandatory

Choose logo #0353363K or logo #0353364K

For logo #0353363K add \$8.10 per item

For logo #0353364K add \$5.50 per item

| | | |
|------------|----------------|---------|
| 223008-BQ8 | LITTLE Kid S-L | \$29.50 |
| 223010-BQ5 | Kids S-XL | \$29.50 |
| 223011-BQX | WOMEN S-XL | \$35.00 |

- Soft-as-can-be 100% cotton for all-day comfort
- Bulk-free fit under the arms
- V-neck makes it perfect for layering
- Shape-keeping rib-knit cuffs and hem



Drifter Sweater Vest



Approved colors:

red

Logo is mandatory

Choose logo #0353363K or logo #0353364K

For logo #0353363K add \$8.10 per item

For logo #0353364K add \$5.50 per item

| | | |
|------------|----------------|---------|
| 223014-BQ3 | LITTLE Kid S-L | \$25.00 |
| 223015-BQ8 | Kids S-XL | \$25.00 |
| 223016-BQ2 | WOMEN S-XL | \$29.50 |

- Soft-as-can-be cotton for all-day comfort
- Rib-knit trim keeps its shape wash after wash
- Adds a fresh look to any outfit

Fine Gauge Cardigan



Approved colors:

red, white

Logo is mandatory

Choose logo #0353363K or logo #0353364K

For logo #0353363K add \$8.10 per item

For logo #0353364K add \$5.50 per item

| | | |
|------------|------------------|---------|
| 092806-BQ7 | LITTLE GIRL S-L | \$25.50 |
| 092807-BQ1 | GIRL S-XL | \$25.50 |
| 092808-BQ6 | WOMEN S-XL | \$40.00 |
| 315351-BQ4 | WOMEN PLUS 1X-3X | \$45.50 |

- 100% cotton
- Fully fashioned to fit great
- No bulky shoulder seams
- Sag-free rib-knit trim

Ruffle Front Cardigan



Approved colors:

red

Logo is mandatory

Choose logo #0353363K or logo #0353364K

For logo #0353363K add \$8.10 per item

For logo #0353364K add \$5.50 per item

| | | |
|------------|-----------------|---------|
| 230982-BQX | LITTLE GIRL S-L | \$29.50 |
| 230983-BQ4 | GIRL S-XL | \$29.50 |

- 100% combed cotton
- Neatly knit for a better fit
- Pretty ruffle trim frames the full-button placket
- Rib-knit trim at neck, sleeves, bottom hem



Cable Crewneck Sweater



Approved colors:

red

Logo is mandatory

Choose logo #0353363K or logo #0353364K

For logo #0353363K add \$8.10 per item

For logo #0353364K add \$5.50 per item

| | | |
|------------|-----------------|---------|
| 092917-BQ8 | LITTLE GIRL S-L | \$24.50 |
| 092918-BQ2 | GIRL S-XL | \$24.50 |
| 092919-BQ7 | WOMEN S-XL | \$29.50 |

- 100% cotton
- Fully fashioned to fit great
- All-over cable design
- Sag-free rib-knit trim

Cable Zip Front Hooded Sweater



Approved colors:

red

Logo is mandatory

Choose logo #0353363K or logo #0353364K

For logo #0353363K add \$8.10 per item

For logo #0353364K add \$5.50 per item

| | | |
|------------|-----------------|---------|
| 230985-BQ3 | LITTLE GIRL S-L | \$24.50 |
| 230986-BQ8 | GIRL S-XL | \$24.50 |
| 230987-BQ2 | WOMEN S-XL | \$29.50 |

- 100% combed cotton
- Fully fashioned for a better fit, more comfort
- Rich, plush cables in front
- Soft rib-knit on back and hood
- Full-zip front

Cable Button Crewneck Sweater



Approved colors:

red

Logo is mandatory

Choose logo #0353363K or logo #0353364K

For logo #0353363K add \$8.10 per item

For logo #0353364K add \$5.50 per item

| | | |
|------------|-----------------|---------|
| 320032-BQ5 | LITTLE GIRL S-L | \$34.50 |
| 320033-BQX | GIRL S-XL | \$34.50 |

- 100% cotton
- Intricate all-over cable design
- Carefully knit to layer nicely over polos or blouses
- Full-button front



Plain Front Blended Chino Pants



Approved colors:

khaki

Logo is not allowed

| | | |
|------------|------------------------|---------|
| 315346-BQ3 | TOTS 2T-4T | \$25.50 |
| 231116-BQ2 | LITTLE GIRL 4-6X | \$25.50 |
| 231117-BQ7 | LITTLE GIRL SLIM 4-6X | \$25.50 |
| 231118-BQ1 | GIRL 7, 8-16 EVEN | \$25.50 |
| 231119-BQ6 | GIRL SLIM 7, 8-16 EVEN | \$25.50 |
| 231120-BQ9 | GIRL PLUS 7, 8-16 EVEN | \$25.50 |
| 231121-BQ3 | WOMEN 00-20 EVEN | \$32.50 |

- 60% cotton/40% polyester
- Blend fabric resists stains and wrinkles
- Inside adjustable waist helps fine-tune the fit

Plain Front Stain Resistant Chino Pants



Approved colors:

khaki

Logo is not allowed

| | | |
|------------|------------------------|---------|
| 219336-BQ8 | LITTLE GIRL 4-6X | \$29.50 |
| 219335-BQ3 | LITTLE GIRL SLIM 4-6X | \$29.50 |
| 219338-BQ7 | GIRL 7, 8-16 EVEN | \$29.50 |
| 219337-BQ2 | GIRL SLIM 7, 8-16 EVEN | \$29.50 |
| 219339-BQ1 | GIRL PLUS 7, 8-16 EVEN | \$29.50 |

- 98% cotton/2% spandex
- Performance fabric resists spills and stains
- Dash of stretch for added comfort
- Inside adjustable waist helps fine-tune the fit

Plain Front Poly Blend Feminine Fit Pants



Approved colors:

khaki

Logo is not allowed

| | | |
|------------|------------------------|---------|
| 381249-BQ3 | GIRL 7, 8-16 EVEN | \$29.50 |
| 381250-BQ6 | GIRL SLIM 7, 8-16 EVEN | \$29.50 |
| 381251-BQ0 | GIRL PLUS 7, 8-16 EVEN | \$29.50 |
| 381252-BQ5 | WOMEN 0-18 EVEN | \$34.50 |

- 60% cotton/40% polyester
- Blend fabric resists stains and wrinkles
- Inside adjustable waist helps fine-tune the fit



Pleated Front Blended Chino Pants



Approved colors:

khaki

Logo is not allowed

| | | |
|------------|------------------------|---------|
| 231110-BQ5 | LITTLE GIRL 4-6X | \$25.50 |
| 231111-BQX | LITTLE GIRL SLIM 4-6X | \$25.50 |
| 231112-BQ4 | GIRL 7, 8-16 EVEN | \$25.50 |
| 231113-BQ9 | GIRL SLIM 7, 8-16 EVEN | \$25.50 |
| 231114-BQ3 | GIRL PLUS 7, 8-16 EVEN | \$25.50 |
| 231115-BQ8 | WOMEN 4-18 EVEN | \$32.50 |

- 60% cotton/40% polyester
- Blend fabric resists stains and wrinkles
- Inside adjustable waist helps fine-tune the fit
- Little Girl: snap-front closure, back elastic for ease
- Girl: button-front closure

Elastic Waist Chino Pants



Approved colors:

khaki

Logo is not allowed

| | | |
|------------|------------------------|---------|
| 092602-BQ3 | LITTLE GIRL 4-6X | \$25.50 |
| 092604-BQ2 | GIRL 7, 8-16 EVEN | \$25.50 |
| 092606-BQ1 | GIRL PLUS 7, 8-16 EVEN | \$25.50 |
| 092607-BQ6 | WOMEN 4-18 EVEN | \$32.50 |

- 60% polyester/40% cotton
- Comfortable full elastic waist
- Wrinkle-free fabric
- Slightly flared legs
- Two side pockets; one in back

Short Sleeve Mesh Polo Dress



Approved colors:

red

Logo #0353364K is mandatory

Prices include logo

| | | |
|------------|-------------------|---------|
| 338741-BQ9 | LITTLE GIRL 4-6X | \$35.00 |
| 338742-BQ3 | GIRL 7, 8-16 EVEN | \$35.00 |

- Performance fabric fights wrinkles, stains and fading
- Airy 100% cotton mesh keeps her cool
- Neat 2-button placket and stitched-down pleats
- At-the-knee length



Long Sleeve Mesh Polo Dress



Approved colors:

red

Logo #0353364K is mandatory

Prices include logo

| | | |
|------------|-------------------|---------|
| 381236-BQ6 | LITTLE GIRL 4-6X | \$38.00 |
| 381237-BQ0 | GIRL 7, 8-16 EVEN | \$38.00 |

- Performance fabric fights wrinkles, stains and fading
- Airy 100% cotton mesh keeps her cool
- Neat 2-button placket and stitched-down pleats
- At-the-knee length

Solid Jumper



Approved colors:

khaki

Logo #0353364K is mandatory

Prices include logo

| | | |
|------------|------------------------|---------|
| 068175-BQ7 | LITTLE GIRL 4-6X | \$40.50 |
| 068176-BQ1 | GIRL 7, 8-16 EVEN | \$40.50 |
| 068177-BQ6 | GIRL PLUS 7, 8-16 EVEN | \$40.50 |

- Taffeta lining in the bodice helps it slide on smoothly
- Extra-long back zipper makes for easier dressing
- Wrinkle-resistant polyester/rayon blend

Solid Blend Side Pleated Jumper



Approved colors:

khaki

Logo #0353364K is mandatory

Prices include logo

| | | |
|------------|------------------------|---------|
| 246711-BQ6 | LITTLE GIRL 4-6X | \$40.50 |
| 246712-BQ0 | GIRL 7, 8-16 EVEN | \$40.50 |
| 246713-BQ5 | GIRL PLUS 7, 8-16 EVEN | \$40.50 |

- 65% polyester/35% rayon blend shirks wrinkles
- Long back zipper makes her a quick-change artist
- Side pleats keep their shape, add moving room



Knit Wrap Jumper



Approved colors:

khaki

Logo #0353364K is mandatory

Prices include logo

| | | |
|------------|------------------------|---------|
| 384803-BQ3 | LITTLE GIRL 4-6X | \$33.00 |
| 384804-BQ8 | GIRL 7, 8-16 EVEN | \$33.00 |
| 384805-BQ2 | GIRL PLUS 7, 8-16 EVEN | \$33.00 |

- Soft 100% cotton
- Substantial jersey fabric lends a neat appearance, holds its shape
- Button on each shoulder simplifies dressing
- Smooth clean-finished armholes
- Above-knee length

Solid A Line Skirt



Approved colors:

khaki

Logo is not allowed

| | | |
|------------|------------------------|---------|
| 068043-BQ4 | LITTLE GIRL 4-6X | \$29.50 |
| 068044-BQ9 | LITTLE GIRL SLIM 4-6X | \$29.50 |
| 068045-BQ3 | GIRL 7, 8-16 EVEN | \$29.50 |
| 068046-BQ8 | GIRL SLIM 7, 8-16 EVEN | \$29.50 |
| 068047-BQ2 | GIRL PLUS 7, 8-16 EVEN | \$29.50 |
| 250212-BQ7 | WOMEN 00-20 EVEN | \$35.00 |

- Unique fabric blend resists wrinkles, lets you skip ironing!
- Elastic-back waistband won't gouge her middle
- Hidden side zipper and button closure looks tidy, makes dressing easy

Solid Pleated At-The-Knee Skirt



Approved colors:

khaki

Logo is not allowed

| | | |
|------------|------------------------|---------|
| 065143-BQ1 | LITTLE GIRL 4-6X | \$29.50 |
| 065144-BQ6 | LITTLE GIRL SLIM 4-6X | \$29.50 |
| 065145-BQ0 | GIRL 7, 8-16 EVEN | \$29.50 |
| 065146-BQ5 | GIRL SLIM 7, 8-16 EVEN | \$29.50 |
| 065147-BQX | GIRL PLUS 7, 8-16 EVEN | \$29.50 |
| 250211-BQ2 | WOMEN 4-18 EVEN | \$35.00 |

- Elastic-back waistband provides extra breathing room
- Hidden side zipper simplifies dressing
- Drapery polyester/rayon blend shrugs off wrinkles



Short Chino Skort



Approved colors:

khaki

Logo is not allowed

| | | |
|------------|------------------------|---------|
| 320192-BQX | LITTLE GIRL 4-6X | \$22.50 |
| 320079-BQ1 | LITTLE GIRL SLIM 4-6X | \$22.50 |
| 320134-BQ7 | GIRL 7, 8-16 EVEN | \$22.50 |
| 320083-BQ8 | GIRL SLIM 7, 8-16 EVEN | \$22.50 |
| 320085-BQ7 | GIRL PLUS 7, 8-16 EVEN | \$22.50 |
| 320087-BQ6 | WOMEN 4-18 EVEN | \$27.50 |

- 60% cotton/40% polyester
- Inside adjustable waist helps fine-tune the fit
- Roomy side pockets
- Above-knee length

Long Chino Skort



Approved colors:

khaki

Logo is not allowed

| | | |
|------------|------------------------|---------|
| 320082-BQ3 | LITTLE GIRL 4-6X | \$25.50 |
| 320081-BQ9 | LITTLE GIRL SLIM 4-6X | \$25.50 |
| 320086-BQ1 | GIRL 7, 8-16 EVEN | \$25.50 |
| 320084-BQ2 | GIRL SLIM 7, 8-16 EVEN | \$25.50 |
| 320088-BQ0 | GIRL PLUS 7, 8-16 EVEN | \$25.50 |
| 320089-BQ5 | WOMEN 00-20 EVEN | \$29.50 |

- Easy-care 60% cotton/40% polyester blend
- Soft knit shorts tucked underneath
- Inside adjustable waist customizes the fit
- Little Girl sizes are a pull-on style with a back-elastic waist
- Girl sizes have a side-zip entry
- Back vent for easy movement
- At-the-knee length

Knit Wrap Skort



Approved colors:

khaki

Logo is not allowed

| | | |
|------------|------------------------|---------|
| 383646-BQ4 | LITTLE GIRL 4-6X | \$19.50 |
| 383647-BQ9 | GIRL 7, 8-16 EVEN | \$19.50 |
| 383648-BQ3 | GIRL PLUS 7, 8-16 EVEN | \$19.50 |
| 383649-BQ8 | WOMEN 0-20 EVEN | \$24.50 |

- Soft 100% cotton
- Substantial jersey fabric lends a neat appearance, holds its shape
- Pull-on styling with back-elastic waist for ease
- Hidden knits shorts keep everything discreet
- Above-knee length



80/20 Fleece Crew Sweatshirt



Approved colors:

red

Logo is mandatory

Choose logo #0353363K or logo #0353364K

For logo #0353363K add \$8.10 per item

For logo #0353364K add \$5.50 per item

| | | |
|------------|----------------|---------|
| 316240-BQ5 | TOTS 2T-4T | \$15.50 |
| 306542-BQ1 | LITTLE Kid S-L | \$15.50 |
| 306544-BQ0 | Kid S-XL | \$15.50 |
| 219473-BQ1 | WOMEN S-XL | \$19.50 |

- Heavy on the cottony softness, just enough polyester sturdiness
- Garment washing says, "bye-bye" to shrinkage
- Reinforced shoulders stand up to tugging and toddling
- Sag-resistant rib-knit neck, cuffs and bottom

80/20 Hoodie Pullover



Approved colors:

red

Logo is mandatory

Choose logo #0353363K or logo #0353364K

For logo #0353363K add \$8.10 per item

For logo #0353364K add \$5.50 per item

| | | |
|------------|----------------|---------|
| 316232-BQ0 | LITTLE Kid S-L | \$19.50 |
| 316234-BQX | Kid S-XL | \$19.50 |
| 316237-BQ3 | WOMEN S-XL | \$29.50 |

- Soft and durable cotton-rich blend
- Prewashed to maximize softness, minimize shrinkage
- Shape-keeping rib-knit trim
- Large kangaroo pocket for warming hands

Solid Zip Hooded Sweatshirt



Approved colors:

red

Logo is mandatory

Choose logo #0353363K or logo #0353364K

For logo #0353363K add \$8.10 per item

For logo #0353364K add \$5.50 per item

| | | |
|------------|----------------|---------|
| 252116-BQ6 | LITTLE Kid S-L | \$25.00 |
| 252117-BQ0 | Kid S-XL | \$25.00 |
| 219539-BQ7 | WOMEN S-XL | \$29.50 |

- 80% cotton/20% polyester
- Soft, comfy blend keeps its shape
- Jersey-lined hood eliminates static
- Rib knit cuffs, bottom and side panels
- Full-zip front



Polar Fleece Jacket



Approved colors:

red

Logo is mandatory

Choose logo #0353363K or logo #0353364K

For logo #0353363K add \$8.10 per item

For logo #0353364K add \$5.50 per item

| | | |
|------------|----------------|---------|
| 188727-BQ5 | LITTLE Kid S-L | \$29.50 |
| 188726-BQ0 | Kids S-XL | \$29.50 |
| 188724-BQ1 | WOMEN S-XL | \$35.00 |

- Double-sided fleece holds out chills
- Improved fabric reduces pilling
- Full-zip front
- Two zip pockets

Polar Fleece Vest



Approved colors:

red

Logo is mandatory

Choose logo #0353363K or logo #0353364K

For logo #0353363K add \$8.10 per item

For logo #0353364K add \$5.50 per item

| | | |
|------------|----------------|---------|
| 188731-BQ1 | LITTLE Kid S-L | \$29.50 |
| 188730-BQ7 | Kids S-XL | \$29.50 |
| 188728-BQX | WOMEN S-XL | \$35.00 |

- Double-sided fleece holds out chills
- Improved fabric reduces pilling
- Full-zip front
- Two zip pockets

Micro-Fleece Half-Zip Pullover



Approved colors:

red

Logo is mandatory

Choose logo #0353363K or logo #0353364K

For logo #0353363K add \$8.10 per item

For logo #0353364K add \$5.50 per item

| | | |
|------------|----------------|---------|
| 315366-BQ0 | LITTLE Kid S-L | \$19.50 |
| 315368-BQX | Kid S-XL | \$19.50 |

- Lightweight microfleece adds warmth not weight
- Partial-zip front for easy overhead dressing
- Antipilling finish keeps it looking neat



Fleece Hoodie



Approved colors:

red

Logo is mandatory

Choose logo #0353363K or logo #0353364K

For logo #0353363K add \$8.10 per item

For logo #0353364K add \$5.50 per item

| | | |
|------------|----------------|---------|
| 383657-BQ8 | LITTLE Kid S-L | \$34.50 |
| 383658-BQ2 | Kid S-XL | \$34.50 |

- Full-zip front for easy on/off
- Zippered pockets for storage or warming hands
- Soft polyester fleece
- Received Preferred School contribution with purchase



Classmate BigHaul Backpack



Approved colors:

canyon orange, dark chocolate plaid, ivory check, nautical navy, rich red check, vintage olive plaid, winter violet

Due to product design this product can not be logo'd

| | | |
|------------|-----------------------|---------|
| 383756-BQ0 | 18"Hx12 1/2"Wx8 1/2"D | \$49.50 |
|------------|-----------------------|---------|

- Sized for ages 10 & up
- Insulated lunch pocket keeps food cool and fresh
- Padded laptop sleeve holds a 15" laptop
- Mesh side pockets hold water bottles
- Padded back panel for comfort

ClassMate SmallHaul Backpack



Approved colors:

charcoal smoke jumper, dark chocolate deer, fresh rose, fresh rose dog paw, nautical navy horse, nautical navy hurricane, rich red, vintage olive rescue, vivid blue, washed turquoise

Logo is mandatory

Choose logo #0353363K or logo #0353364K

For logo #0353363K add \$8.10 per item

For logo #0353364K add \$5.50 per item

| | | |
|------------|---------------------------|---------|
| 383715-BQ1 | 16"H x 11 1/2"W x 7 1/2"D | \$24.50 |
|------------|---------------------------|---------|

- Sized for kids ages 5-8
- Two big compartments organize their stuff
- Mesh side pockets hold water bottles
- D-ring to clip on lunchbox
- Removable organizer pouch keeps school supplies straight

ClassMate StudyHaul Backpack



Approved colors:

aztec gold tie dye, bright raspberry, canyon orange tie dye, fresh rose tie dye, garnet, nautical navy, nautical navy tie dye, park green tie dye, vintage olive, washed turquoise, winter violet

Logo is mandatory

Choose logo #0353363K or logo #0353364K

For logo #0353363K add \$8.10 per item

For logo #0353364K add \$5.50 per item

| | | |
|------------|----------------------|---------|
| 383755-BQ6 | 17 "H x 12 " W x 8"D | \$29.50 |
|------------|----------------------|---------|

- Sized for kids ages 8-14
- Two big compartments organize their stuff
- Mesh side pockets hold water bottles
- D-ring to clip on lunchbox
- Removable organizer pouch keeps school supplies straight



ClassMate TinyTake Backpack



Approved colors:

canyon orange, fresh rose, rich red, vivid blue, washed turquoise, winter violet

Logo is mandatory

Choose logo #0353363K or logo #0353364K

For logo #0353363K add \$8.10 per item

For logo #0353364K add \$5.50 per item

| | | |
|------------|-----------------------|---------|
| 383704-BQ3 | 14 3/8"H x 11"W x 4"D | \$24.50 |
|------------|-----------------------|---------|

- Sized for kids ages 3-5
- Clear front pocket that fits child's artwork or photo
- Padded shoulder straps for comfort
- D-ring to clip on lunchbox
- 360° reflective trim helps keep kids visible

Wheeled ClassMate StudyHaul Backpack



Approved colors:

aztec gold tie dye, bright raspberry, canyon orange tie dye, fresh rose tie dye, garnet, nautical navy, nautical navy tie dye, park green tie dye, vintage olive, washed turquoise, winter violet

Logo is mandatory

Choose logo #0353363K or logo #0353364K

For logo #0353363K add \$8.10 per item

For logo #0353364K add \$5.50 per item

| | | |
|------------|--------------------|---------|
| 383757-BQ5 | 19½"H x 12"W x 8"D | \$59.50 |
|------------|--------------------|---------|

- Sized for kids ages 8-14
- Inline skate wheels roll smoothly
- Two big compartments organize their stuff
- Mesh side pockets hold water bottle
- Padded back panel for comfort when they carry

FeatherLight Backpack



Approved colors:

bright lemon, bright raspberry, canyon orange, dark cobalt, lime zest, true navy, vintage olive

Logo is mandatory

Choose logo #0353363K or logo #0353364K

For logo #0353363K add \$8.10 per item

For logo #0353364K add \$5.50 per item

| | | |
|------------|-------------------|---------|
| 301771-BQ4 | 18"H x 12"W x 7"D | \$39.50 |
|------------|-------------------|---------|

- 15% lighter than our next lightest pack
- Exterior bungee perfect for stashing a jacket
- Mesh side pockets hold water bottles
- Padded c-shaped shoulder straps sit just right
- Sternum strap keeps shoulder straps in place



MultiTask Backpack



Approved colors:

aztec gold, black, dark cobalt blue, ice blue, orchid bloom, vintage olive

Logo is mandatory

Choose logo #0353363K or logo #0353364K

For logo #0353363K add \$8.10 per item

For logo #0353364K add \$5.50 per item

| | | |
|------------|-------------------|---------|
| 302724-BQ1 | 18"H x 13"W x 8"D | \$39.50 |
|------------|-------------------|---------|

- Stash panel holds a jacket, sports gear or bike helmet
- Side strap lets them carry long items with ease
- 360° reflective trim helps keep kids visible
- Padded c-shaped shoulder straps sit just right
- Organizer panel keeps little stuff straight

Wheeled MultiTask Backpack



Approved colors:

aztec gold, black, dark cobalt blue, ice blue, orchid bloom

Logo is mandatory

Choose logo #0353363K or logo #0353364K

For logo #0353363K add \$8.10 per item

For logo #0353364K add \$5.50 per item

| | | |
|------------|--------------------|---------|
| 383707-BQ7 | 18½"H x 13"W x 8"D | \$69.50 |
|------------|--------------------|---------|

- Sized for kids ages 10 & up
- Stash panel holds a jacket, sports gear or bike helmet
- Inline skate wheels roll smoothly
- Multiple compartments (two large compartments)
- Side compression strap



girls' and women's guide to a GREAT UNIFORM FIT

ORDER THE RIGHT SIZE, FIRST TRY.

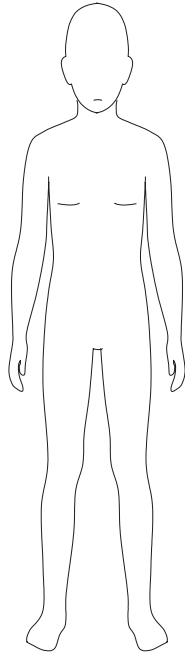
1. Kids grow fast, so measure your child every time you buy.
2. Remove bulky or heavy layers before measuring.
3. Begin with height, it's the best indicator to determine a child's size.
4. After height, a child's weight and/or waist measurement is the best gauge if your child needs an extended size (slim or plus).

HOW DO I KNOW IF MY CHILD NEEDS AN EXTENDED SIZE?

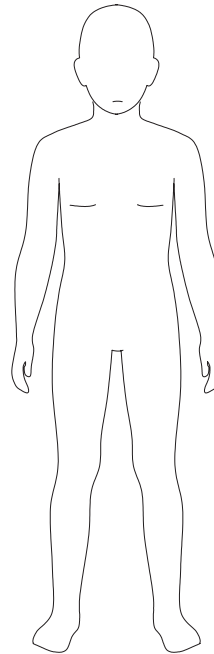
1. If you normally buy her a size 12 to fit her waist, but the inseam is always too long, she may need a 10 Plus (10+). Here's why: a 10+ will give her extra room around her waist, yet has a shorter inseam, for a better overall fit in the waist and length.
2. If you normally buy her a size 12 to fit her waist, but the inseam is always too short, she may need a 14 Slim (14S). Here's why: a 14S is slimmer through the waist, yet has a longer inseam, for a better overall fit in waist and length.

LANDS' END SCHOOL

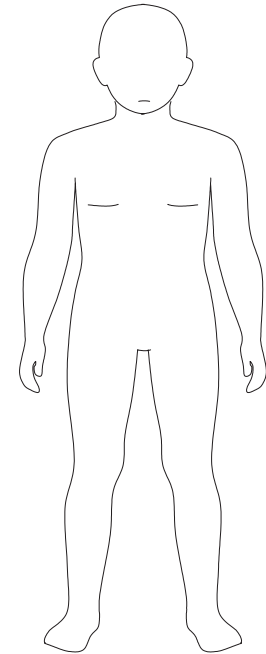
girls' SIZE CHART



SLIM (S)
Thin body and frame
in relation to height



REGULAR (R)
Average frame
and proportions



PLUS (+)
Fuller body in proportion
to height

REMEMBER! Start with height.

HEIGHT: Child should stand in stocking feet, with feet shoulder width apart, back to a wall. Measure from the floor to the crown of head.

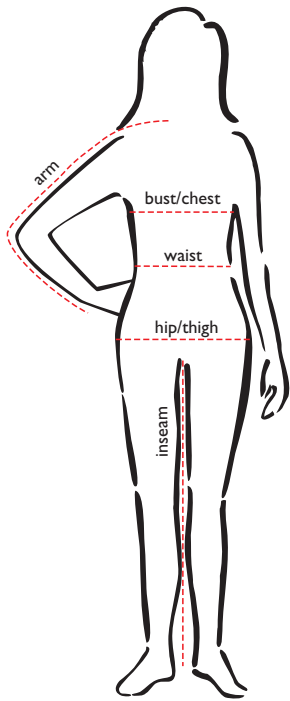
WAIST: Measure at natural waistline. Have the child bend to one side. Where the body curves is the natural waistline.

| Toddler | | | |
|---------|-------|-------|-------|
| Size | 2T | 3T | 4T |
| Height | 33-35 | 36-38 | 39-41 |
| Weight | 27-29 | 30-33 | 34-38 |
| Waist | 20 | 20½ | 21 |

| Little Girl (Slim, Reg) | | | | | | | |
|-------------------------|-------|-------|--------|-------|-------|-------|-------------|
| Size | Small | | Medium | | | Large | |
| | 4S | 4R | 5S | 5R | 6S | 6R | 6XS 6XR |
| Height | 39-41 | | 42-44 | | 45-47 | | 47-49 |
| Weight | 32-34 | 34-38 | 35-39 | 39-44 | 40-45 | 45-49 | 46-48 49-53 |
| Waist | 19½ | 21½ | 20 | 22 | 20½ | 22½ | 21 23 |

| Big Girl (Slim, Reg, Plus) | | | | | | | | | | | | | | | | | | |
|----------------------------|-------|-------|-------|-------|-------|-------|--------|-------|-------|-------|--------|---------|--------|---------|---------|---------|---------|---------|
| Size | Small | | | | | | Medium | | | | | | Large | | | X-Large | | |
| | 7S | 7R | 7+ | 8 S | 8R | 8+ | 10S | 10R | 10+ | 12S | 12R | 12+ | 14S | 14R | 14+ | 16S | 16R | 16+ |
| Height | 48-50 | | | 51-53 | | | 54-57 | | | 57-59 | | | 60-61 | | | 62-63 | | |
| Weight | 44-50 | 50-56 | 56-64 | 51-56 | 57-64 | 64-73 | 64-73 | 73-84 | 84-96 | 81-92 | 92-106 | 106-122 | 98-108 | 108-125 | 125-146 | 109-119 | 119-135 | 135-155 |
| Waist | 21½ | 23 | 27½ | 22 | 23½ | 28 | 23 | 24½ | 29 | 24 | 25½ | 30 | 25 | 26½ | 31 | 26 | 27½ | 32 |

women's SIZE CHART



| Women's Tops | | | | | | | | | | | | | | | | | | | | | | |
|---------------|----------|----|---------|----|-------|----|--------|----|-------|----|---------|----|-----|------|-----|------|------|------|------|------|------|------|
| | xx-small | | x-small | | small | | medium | | large | | x-large | | 1X | | 2X | | 3X | | 4X | | 5X | |
| Size | 00 | 0 | 2 | 4 | 6 | 8 | 10 | 12 | 14 | 16 | 18 | 20 | 16W | 18W | 20W | 22W | 24W | 26W | 28W | 30W | 32W | 34W |
| bust/chest | 31 | 32 | 33 | 34 | 35 | 36 | 37 | 38 | 40 | 41 | 43 | 45 | 43 | 45 | 47 | 49 | 51 | 53 | 55 | 57 | 59 | 61 |
| arm (petite) | 27 ½ | 28 | 28 ¾ | 28 | 29 ½ | 29 | 29 ¾ | 30 | 30 ¾ | 31 | 31 ¾ | 31 | -- | -- | -- | -- | -- | -- | -- | -- | -- | -- |
| arm (regular) | 28 ¾ | 29 | 29 ¾ | 29 | 30 ½ | 30 | 30 ¾ | 31 | 31 ¾ | 32 | 32 ¾ | 32 | -- | -- | -- | -- | -- | -- | -- | -- | -- | -- |
| arm (tall) | -- | -- | 30 ¾ | 30 | 31 ½ | 31 | 31 ¾ | 32 | 32 ¾ | 33 | 33 ¾ | 33 | -- | -- | -- | -- | -- | -- | -- | -- | -- | -- |
| arm (women's) | -- | -- | -- | -- | -- | -- | -- | -- | -- | -- | -- | -- | 31 | 32 ½ | 32 | 32 ¾ | 33 ½ | 33 ¾ | 33 ¾ | 33 ¾ | 34 ½ | 34 ¾ |

| Women's Bottoms | | | | | | | | | | | | | | | | | | | | | | |
|-----------------|----------|----------|----------|----------|----------|----------|----------|----------|----------|----------|----------|----------|----------|----------|----------|----------|----------|----------|----------|----------|----------|----------|
| | xx-small | | x-small | | small | | medium | | large | | x-large | | 1X | | 2X | | 3X | | 4X | | 5X | |
| Size | 00 | 0 | 2 | 4 | 6 | 8 | 10 | 12 | 14 | 16 | 18 | 20 | 16W | 18W | 20W | 22W | 24W | 26W | 28W | 30W | 32W | 34W |
| waist | 24 to 25 | 25 to 26 | 26 to 27 | 27 to 28 | 28 to 29 | 29 to 30 | 30 to 31 | 31 to 32 | 33 to 34 | 34 to 36 | 36 to 38 | 39 to 41 | 37 to 38 | 39 to 40 | 41 to 42 | 43 to 44 | 45 to 46 | 47 to 48 | 49 to 50 | 51 to 52 | 53 to 54 | 55 to 56 |
| hip/thigh | 34 | 35 | 36 | 37 | 38 | 39 | 40 | 41 | 43 | 44 | 46 | 48 | 46 | 48 | 50 | 52 | 54 | 56 | 58 | 60 | 61 | 63 |

To measure accurately, keep the tape measure taut, but don't pull it tight. Get a friend to help, if possible. Measure over well-fitting undergarments.

BUST/CHEST: measure around fullest part of chest, keeping tape parallel to the floor.

ARM: with hand on hip, measure from center back at neck, across shoulder, elbow, down to wrist bone.

WAIST: bend to side; measure where body curves – even if you wear your pants lower.

HIPS: with feet shoulder width apart, measure fullest part of hip/thigh area.

INSEAM: measure inside leg seam of pants from crotch to hem.

Women's Regular, Petite, Tall or 18W-26W?

Regular: hips slightly larger than bust.

Petite: shorter in the torso. Shorter sleeves and body, narrower shoulders.

Tall: long torsos. Body length up 1-1/2" and sleeve length up 1" from Regular.

Women's 18W-26W: proportioned for fuller figures. 18W is 2" larger in the bust, waist and hip than 18 regular. Arm girths are larger; shoulder widths narrower.



boys' and men's guide to a GREAT UNIFORM FIT

ORDER THE RIGHT SIZE, FIRST TRY.

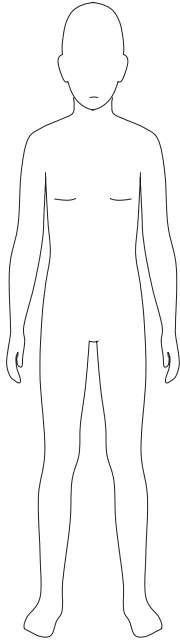
1. Kids grow fast, so measure your child every time you buy.
2. Remove bulky or heavy layers before measuring.
3. Begin with height, it's the best indicator to determine a child's size.
4. After height, a child's weight and/or waist measurement is the best gauge if your child needs an extended size (slim or plus).

HOW DO I KNOW IF MY CHILD NEEDS AN EXTENDED SIZE?

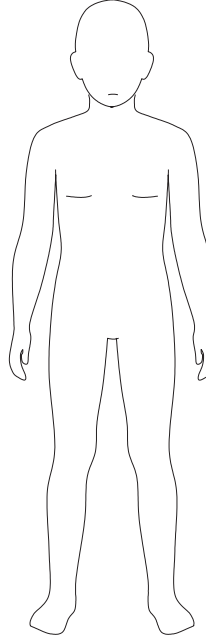
1. If you normally buy him a size 12 to fit his waist, but the inseam is always too long, he may need a 10 HUSKY (10H). Here's why: a 10H will give him extra room around his waist, yet has a shorter inseam, for a better overall fit in the waist and length.
2. If you normally buy him a size 12 to fit his waist, but the inseam is always too short, he may need a 14 Slim (14S). Here's why: a 14S is slimmer through the waist, yet has a longer inseam, for a better overall fit in waist and length.

LANDS' END SCHOOL

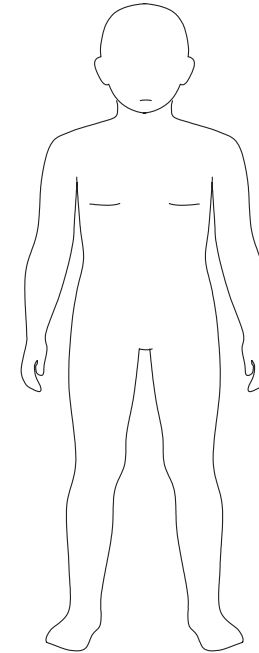
boys' SIZE CHART



SLIM (S)
Thin body and frame
in relation to height



REGULAR (R)
Average frame
and proportions



HUSKY (H)
Fuller body in proportion
to height

REMEMBER! Start with height.

HEIGHT: Child should stand in stocking feet, with feet shoulder width apart, back to a wall. Measure from the floor to the crown of head.

WAIST: Measure at natural waistline. Have the child bend to one side. Where the body curves is the natural waistline.

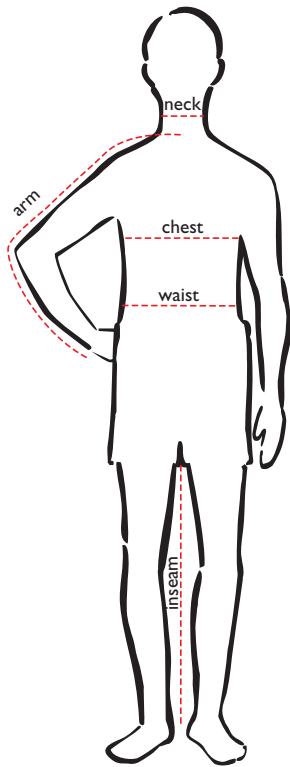
| Toddler | | | |
|---------|-------|-------|-------|
| Size | 2T | 3T | 4T |
| Height | 33-35 | 36-38 | 39-41 |
| Weight | 27-29 | 30-33 | 34-38 |
| Waist | 20 | 20½ | 21 |

| Little Boy (Slim, Reg) | | | | | | | | | |
|------------------------|-------|-------|--------|-------|-------|-------|-------|-------|--|
| Size | Small | | Medium | | | | Large | | |
| | 4S | 4R | 5S | 5R | 6S | 6R | 7S | 7R | |
| Height | 39-41 | | 42-44 | | 45-47 | | 48-50 | | |
| Weight | 32-34 | 34-38 | 35-39 | 39-44 | 40-45 | 45-49 | 49-50 | 50-56 | |
| Waist | 19½ | 21½ | 20 | 22 | 20½ | 22½ | 21 | 23 | |

| Big Boy (Slim, Reg, Husky) | | | | | | | | | | |
|----------------------------|-------|-------|-------|--------|-------|-------|-------|--------|---------|--|
| Size | Small | | | Medium | | | | | | |
| | 8S | 8R | 8H | 10S | 10R | 10H | 12S | 12R | 12H | |
| Height | 51-53 | | | 54-57 | | | 58-61 | | | |
| Weight | 52-56 | 56-64 | 64-72 | 62-70 | 70-80 | 80-92 | 78-90 | 90-102 | 102-118 | |
| Waist | 21½ | 23½ | 26½ | 22½ | 24½ | 27½ | 23½ | 25½ | 28½ | |

| Big Boy (Slim, Reg, Husky) | | | | | | | | | | | | |
|----------------------------|--------|---------|---------|---------|---------|---------|---------|---------|---------|---------|---------|---------|
| Size | Large | | | | | | X-Large | | | | | |
| | 14S | 14R | 14H | 16S | 16R | 16H | 18S | 18R | 18H | 20S | 20R | 20H |
| Height | 62-63 | | | 64-65 | | | 66-67 | | | 68-70 | | |
| Weight | 95-102 | 112-128 | 128-146 | 120-134 | 134-152 | 152-162 | 134-148 | 148-166 | 164-172 | 140-156 | 156-174 | 174-196 |
| Waist | 24½ | 26½ | 29½ | 26 | 28 | 31 | 27 | 29 | 32 | 28 | 30 | 33 |

men's SIZE CHART



| Men's | | | | | | | | | | | | | | | | | | |
|--------------------|-------|----|--------|----|-------|----|---------|----|----------|----|-----|----|-----|----|-----|----|-----|----|
| | small | | medium | | large | | x-large | | xx-large | | 2XL | | 3XL | | 4XL | | 5XL | |
| neck | 14 | 14 | 15 | 15 | 16 | 16 | 17 | 17 | 18 | 18 | 18 | 18 | 19 | 19 | 20 | 20 | 21 | 21 |
| chest | 34 | 36 | 38 | 40 | 42 | 44 | 46 | 48 | 50 | 52 | 50 | 52 | 54 | 56 | 58 | 60 | 62 | 64 |
| arm (regular) | 32 | 33 | 33 | 34 | 34 | 35 | 35 | 36 | 36 | 36 | 35 | 35 | 36 | 36 | 37 | 37 | 38 | 38 |
| arm (tall) | 34 | 34 | 35 | 35 | 36 | 36 | 37 | 37 | 38 | 38 | 36 | 37 | 37 | 38 | 38 | 39 | 39 | 40 |
| waist (regular) | 28 | 30 | 32 | 34 | 36 | 38 | 40 | 42 | 44 | 46 | 48 | 48 | 50 | 52 | 54 | 56 | 58 | 60 |
| hips | 34 | 36 | 38 | 40 | 42 | 44 | 45 | 47 | 48 | 50 | 51 | | 53 | 54 | 55 | 55 | 56 | 56 |

To measure accurately, keep the tape measure taut, but don't pull it tight. Get a friend to help, if possible. Measure over well-fitting undergarments.

CHEST: measure around fullest part of chest, keeping tape parallel to the floor.

ARM: with hand on hip, measure from center back at neck, across shoulder, elbow, down to wrist bone.

WAIST: bend to side; measure where body curves – even if you wear your pants lower.

HIPS: with feet shoulder width apart, measure fullest part of hip/thigh area.

INSEAM: measure inside leg seam of pants from crotch to hem.

Men's Regular, Tall or Big?

Regular: hips and chest of equal girth.

Tall (or Long): long torso. Body of shirts is 1-1/2" to 2" longer than Regular. Coat sleeve and body length is 1-1/2" longer.

Big: average torso length, just larger overall. Pockets and other details increase in size for a pleasing proportion.