



# LANDS' END SCHOOL

Laurel School  
1 Lyman Cir  
Shaker Heights, OH 44122-2110  
Preferred School Number: 900086034

# Welcome to Lands' End School!

## **Guaranteed. Period.®**

If you're not satisfied with any item, return it to us at any time for an exchange or refund of its purchase price.

## **Pass-along quality.**

We're serious about comfort, construction and durability. So our products hold up from the first day of school to the last. (And through the next kid in line.)

Shop by dress code online. Preferred Schools can view their dress code online to make ordering even easier.

## **3% cash back.**

Preferred Schools earn 3% cash back on all uniform purchases. It's easy and free to sign up – visit [landsend.com/school](http://landsend.com/school)

## **Sizes for grades pre-K to 12.**

We offer a great selection of Slim, Plus and Husky sizes for boys and girls.



1-800-469-2222  
[landsend.com/school](http://landsend.com/school)

# LANDS' END SCHOOL

All prices in U.S. dollars. Prices subject to change.  
©Copyright 2009, Lands' End, Inc. All rights reserved.

# LAUREL SCHOOL

## **LOGO #0329609K, School Name, \$5.50**

- Your school has provided this logo and set certain restrictions regarding its use. Please check each individual product in your dress code for details
- Personalized monograms are not allowed with this logo
- Logo and fabric shown are for display purposes only
- Actual embroidery thread colors may vary



### Short Sleeve Solid Performance Mesh Polo



**Approved colors:**

**Grades K-4:** white

**Grades 5-12:** classic navy, evergreen, white

**Logo is mandatory**

**Prices include logo**

051465-BQ8	TOTS 2T-4T	\$21.00
051467-BQ7	LITTLE Kid S-L	\$21.00
051469-BQ6	Kid S-XL	\$21.00
167542-BQ0	WOMEN S-XL	\$25.00

- Soft, 100% cotton mesh
- Resists shrinkage, fading and pilling
- Stains wash out easier

### Long Sleeve Solid Performance Mesh Polo



**Approved colors:**

**Grades K-4:** white

**Grades 5-12:** classic navy, evergreen, white

**Logo is mandatory**

**Prices include logo**

051422-BQX	TOTS 2T-4T	\$23.00
051437-BQ6	LITTLE Kid S-L	\$23.00
051438-BQ0	Kid S-XL	\$23.00
167540-BQ1	WOMEN S-XL	\$30.50

- Soft, 100% cotton mesh
- Resists shrinkage, fading and pilling
- Stains wash out easier

### Short Sleeve Feminine Fit Mesh Polo



**Approved colors:**

**Grades K-4:** white

**Grades 5-12:** classic navy, evergreen, white

**Logo is mandatory**

**Prices include logo**

230948-BQ2	LITTLE GIRL S-L	\$21.00
230949-BQ7	GIRL S-XL	\$21.00
230950-BQX	WOMEN XS-XL	\$19.50
315253-BQ0	WOMEN PLUS 1X-3X	\$25.00

- 100% cotton
- Soft, mesh fabric keeps her cool
- Gently shaped side seams are more flattering
- Enhanced fabric keeps colors true
- Resists stains and shrinkage
- Top-of-hip length with side vents



### Long Sleeve Mesh Feminine Fit Polo



**Approved colors:**

**Grades K-4:** white

**Grades 5-12:** classic navy, evergreen, white

**Logo is mandatory**

**Prices include logo**

230951-BQ4	LITTLE GIRL S-L	\$23.00
230952-BQ9	GIRL S-XL	\$23.00
230953-BQ3	WOMEN XS-XL	\$30.50
315261-BQ5	WOMEN PLUS 1X-3X	\$35.50

- 100% cotton
- Soft, mesh fabric keeps her cool
- Gently shaped side seams are more flattering
- Enhanced fabric keeps colors true
- Resists stains and shrinkage
- Top-of-hip length with side vents

### Short Sleeve Solid Performance Interlock Polo



**Approved colors:**

**Grades K-4:** white

**Grades 5-12:** classic navy, evergreen, white

**Logo is mandatory**

**Prices include logo**

051377-BQ8	LITTLE Kid S-L	\$21.00
051402-BQ2	Kid S-XL	\$21.00
313702-BQ8	WOMEN S-XL	\$30.50

- Soft, 100% cotton interlock
- Won't shrink out of fit
- Won't pill or fade, wash after wash
- Stains wash out easier

### Long Sleeve Solid Performance Interlock Polo



**Approved colors:**

**Grades K-4:** white

**Grades 5-12:** classic navy, evergreen, white

**Logo is mandatory**

**Prices include logo**

051356-BQ6	LITTLE Kid S-L	\$23.00
051369-BQ3	Kid S-XL	\$23.00
313699-BQX	WOMEN S-XL	\$35.50

- Soft, 100% cotton interlock
- Won't shrink out of fit
- Won't pill or fade, wash after wash
- Stains wash out easier



### Short Sleeve Interlock Feminine Fit Polo



**Approved colors:**

**Grades K-4:** white

**Grades 5-12:** classic navy, evergreen, white

**Logo is mandatory**

**Prices include logo**

230954-BQ8	LITTLE GIRL S-L	\$21.00
230955-BQ2	GIRL S-XL	\$21.00
230956-BQ7	WOMEN S-XL	\$30.50
315263-BQ4	WOMEN PLUS 1X-3X	\$35.50

- Plush 100% cotton
- Resists fading/stains
- Top-of-hip length with side vents
- Sized to allow for shrinkage, please wash before wear

### Long Sleeve Interlock Feminine Fit Polo



**Approved colors:**

**Grades K-4:** white

**Grades 5-12:** classic navy, evergreen, white

**Logo is mandatory**

**Prices include logo**

230957-BQ1	LITTLE GIRL S-L	\$23.00
230958-BQ6	GIRL S-XL	\$23.00
230959-BQ0	WOMEN S-XL	\$35.50
315269-BQ1	WOMEN PLUS 1X-3X	\$40.50

- Plush 100% cotton
- Resists fading/stains
- Top-of-hip length with side vents
- Sized to allow for shrinkage, please wash before wear

### Long Sleeve Oxford Shirt



**Approved colors:**

white

**Grades 9-12**

**Logo is mandatory**

**Prices include logo**

219323-BQ0	LITTLE GIRL 4-6X	\$25.00
219324-BQ5	GIRL 7, 8-16 EVEN	\$25.00
284294-BQ5	WOMEN XS-XL	\$30.50
315311-BQX	WOMEN PLUS 1X-3X	\$35.00

- 60% cotton/40% polyester fabric foils wrinkles
- Breathable easy care fabric
- Feminine fit



### Three-quarter Sleeve Oxford Shirt



**Approved colors:**

white

**Staff Only**

**Logo is mandatory**

**Prices include logo**

027047-BQ7	LITTLE GIRL 4-6X	\$25.00
320036-BQ3	GIRL 7, 8-16 EVEN	\$25.00
027049-BQ6	WOMEN 00-20	\$30.50

- 60% cotton/40% polyester fabric foils wrinkles
- Breathable easy care fabric

### Long Sleeve Solid Performance Mock Turtleneck



**Approved colors:**

classic navy, evergreen, white

**Logo is mandatory**

**Prices include logo**

061096-BQ3	LITTLE Kid S-L	\$20.00
061097-BQ8	Kid S-XL	\$20.00

- Soft, 100% cotton interlock
- Won't shrink out of fit
- Won't pill or fade, wash after wash
- Stains wash out easier

### Long Sleeve Solid Performance Turtleneck



**Approved colors:**

classic navy, evergreen, white

**Logo is mandatory**

**Prices include logo**

061101-BQ0	LITTLE Kid S-L	\$20.00
061098-BQ2	Kid S-XL	\$20.00

- Soft, 100% cotton interlock
- Won't shrink out of fit
- Won't pill or fade, wash after wash
- Stains wash out easier



### Button Front Drifter Cardigan



**Approved colors:**

classic navy, evergreen, white

**Logo is optional**

**For logo #0329609K add \$5.50 per item**

315289-BQ9	LITTLE Kid S-L	\$35.00
315296-BQ9	Kids S-XL	\$35.00
315299-BQ2	WOMEN S-XL	\$39.50

- Soft-as-can-be 100% cotton for all-day comfort
- Bulk-free fit under the arms
- V-neck makes it perfect for layering
- Shape-keeping rib-knit cuffs and hem

### Drifter Crew Sweater



**Approved colors:**

classic navy, evergreen, white

**Logo is optional**

**For logo #0329609K add \$5.50 per item**

223003-BQ5	LITTLE Kid S-L	\$29.50
223004-BQX	Kids S-XL	\$29.50
223005-BQ4	WOMEN S-XL	\$35.00

- Soft-as-can-be cotton for all-day comfort
- Fully fashioned for a better, more comfortable fit
- Raglan sleeves
- Shape-keeping rib trim

### Drifter V-neck Sweater



**Approved colors:**

classic navy, evergreen, white

**Grades 5-12**

**Logo is optional**

**For logo #0329609K add \$5.50 per item**

223008-BQ8	LITTLE Kid S-L	\$29.50
223010-BQ5	Kids S-XL	\$29.50
223011-BQX	WOMEN S-XL	\$35.00

- Soft-as-can-be 100% cotton for all-day comfort
- Bulk-free fit under the arms
- V-neck makes it perfect for layering
- Shape-keeping rib-knit cuffs and hem



### Drifter Sweater Vest



**Approved colors:**

classic navy, evergreen

**Grades 5-12**

**Logo is optional**

**For logo #0329609K add \$5.50 per item**

223014-BQ3	LITTLE Kid S-L	\$25.00
223015-BQ8	Kids S-XL	\$25.00
223016-BQ2	WOMEN S-XL	\$29.50

- Soft-as-can-be cotton for all-day comfort
- Rib-knit trim keeps its shape wash after wash
- Adds a fresh look to any outfit

### Plain Front Blended Chino Pants



**Approved colors:**

classic navy, khaki

**Logo is not allowed**

315346-BQ3	TOTS 2T-4T	\$25.50
231116-BQ2	LITTLE GIRL 4-6X	\$25.50
231117-BQ7	LITTLE GIRL SLIM 4-6X	\$25.50
231118-BQ1	GIRL 7, 8-16 EVEN	\$25.50
231119-BQ6	GIRL SLIM 7, 8-16 EVEN	\$25.50
231120-BQ9	GIRL PLUS 7, 8-16 EVEN	\$25.50
231121-BQ3	WOMEN 00-20	\$32.50

- 60% cotton/40% polyester
- Blend fabric resists stains and wrinkles
- Inside adjustable waist helps fine-tune the fit

### Plain Front Stain Resistant Chino Pants



**Approved colors:**

classic navy, khaki

**Logo is not allowed**

219336-BQ8	LITTLE GIRL 4-6X	\$29.50
219335-BQ3	LITTLE GIRL SLIM 4-6X	\$29.50
219338-BQ7	GIRL 7, 8-16 EVEN	\$29.50
219337-BQ2	GIRL SLIM 7, 8-16 EVEN	\$29.50
219339-BQ1	GIRL PLUS 7, 8-16 EVEN	\$29.50

- 98% cotton/2% spandex
- Performance fabric resists spills and stains
- Dash of stretch for added comfort
- Inside adjustable waist helps fine-tune the fit



### Pleated Front Blended Chino Pants



**Approved colors:**

classic navy, khaki

**Logo is not allowed**

231110-BQ5	LITTLE GIRL 4-6X	\$25.50
231111-BQX	LITTLE GIRL SLIM 4-6X	\$25.50
231112-BQ4	GIRL 7, 8-16 EVEN	\$25.50
231113-BQ9	GIRL SLIM 7, 8-16 EVEN	\$25.50
231114-BQ3	GIRL PLUS 7, 8-16 EVEN	\$25.50
231115-BQ8	WOMEN 4-18	\$32.50

- 60% cotton/40% polyester
- Blend fabric resists stains and wrinkles
- Inside adjustable waist helps fine-tune the fit
- Little Girl: snap-front closure, back elastic for ease
- Girl: button-front closure

### Elastic Waist Chino Pants



**Approved colors:**

classic navy, khaki

**Logo is not allowed**

092602-BQ3	LITTLE GIRL 4-6X	\$25.50
092604-BQ2	GIRL 7, 8-16 EVEN	\$25.50
092606-BQ1	GIRL PLUS 7, 8-16 EVEN	\$25.50
092607-BQ6	WOMEN 4-18	\$32.50

- 60% polyester/40% cotton
- Comfortable full elastic waist
- Wrinkle-free fabric
- Slightly flared legs
- Two side pockets; one in back

### 5 Pocket Flare Corduroy Pant



**Approved colors:**

classic navy, khaki

**Logo is not allowed**

231136-BQX	LITTLE GIRL 4-6X	\$29.50
231140-BQ6	LITTLE GIRL SLIM 4-6X	\$29.50
231141-BQ0	GIRL 7, 8-16 EVEN	\$29.50
231143-BQX	GIRL SLIM 7, 8-16 EVEN	\$29.50
231144-BQ4	GIRL PLUS 7, 8-16 EVEN	\$29.50
231146-BQ3	WOMEN 4-18	\$35.50

- 98% cotton/2% spandex
- Soft cotton corduroy with a bit of stretch for extra comfort
- Five-pocket styling with flared leg
- Inside adjustable waist helps fine-tune the fit
- Little girl: snap-front closure with back elastic for ease
- Girl: button-front closure



### 80/20 Fleece Crew Sweatshirt



**Approved colors:**

classic navy, evergreen

**Grades 9-12**

**Logo is optional**

**For logo #0329609K add \$5.50 per item**

316240-BQ5	Tots 2T-4T	\$15.50
306542-BQ1	LITTLE Kid S-L	\$15.50
306544-BQ0	Kid S-XL	\$15.50
219473-BQ1	WOMEN S-XL	\$19.50

- Heavy on the cottony softness, just enough polyester sturdiness
- Garment washing says, "bye-bye" to shrinkage
- Reinforced shoulders stand up to tugging and toddling
- Sag-resistant rib-knit neck, cuffs and bottom

### Solid Zip Hooded Sweatshirt



**Approved colors:**

classic navy

**Logo is optional**

**For logo #0329609K add \$5.50 per item**

252116-BQ6	LITTLE Kid S-L	\$25.00
252117-BQ0	Kid S-XL	\$25.00
219539-BQ7	WOMEN S-XL	\$29.50

- 80% cotton/20% polyester
- Soft, comfy blend keeps its shape
- Jersey-lined hood eliminates static
- Rib knit cuffs, bottom and side panels
- Full-zip front



## girls' and women's guide to a GREAT UNIFORM FIT

### ORDER THE RIGHT SIZE, FIRST TRY.

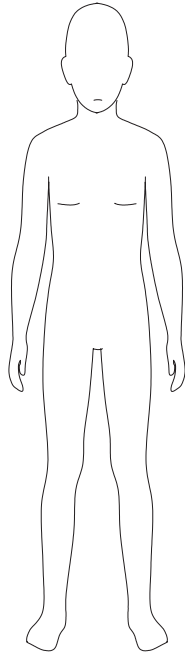
1. Kids grow fast, so measure your child every time you buy.
2. Remove bulky or heavy layers before measuring.
3. Begin with height, it's the best indicator to determine a child's size.
4. After height, a child's weight and/or waist measurement is the best gauge if your child needs an extended size (slim or plus).

### HOW DO I KNOW IF MY CHILD NEEDS AN EXTENDED SIZE?

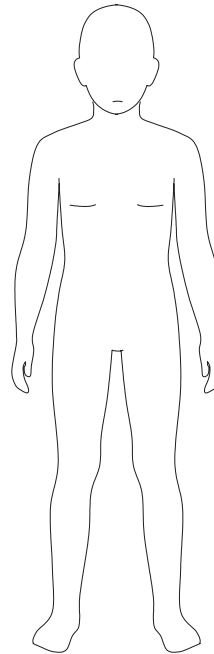
1. If you normally buy her a size 12 to fit her waist, but the inseam is always too long, she may need a 10 Plus (10+). Here's why: a 10+ will give her extra room around her waist, yet has a shorter inseam, for a better overall fit in the waist and length.
2. If you normally buy her a size 12 to fit her waist, but the inseam is always too short, she may need a 14 Slim (14S). Here's why: a 14S is slimmer through the waist, yet has a longer inseam, for a better overall fit in waist and length.

LANDS' END SCHOOL

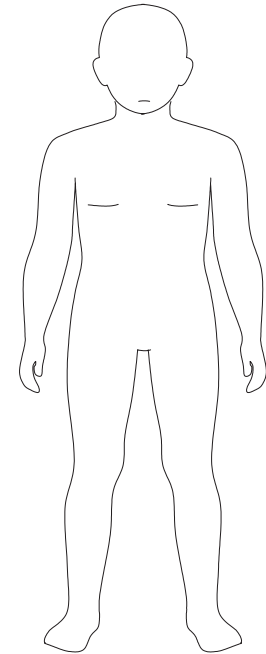
# girls' SIZE CHART



**SLIM (S)**  
Thin body and frame  
in relation to height



**REGULAR (R)**  
Average frame  
and proportions



**PLUS (+)**  
Fuller body in proportion  
to height

**REMEMBER! Start with height.**

**HEIGHT:** Child should stand in stocking feet, with feet shoulder width apart, back to a wall. Measure from the floor to the crown of head.

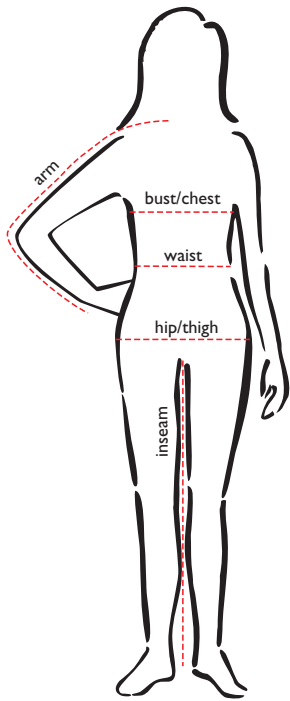
**WAIST:** Measure at natural waistline. Have the child bend to one side. Where the body curves is the natural waistline.

Toddler			
Size	2T	3T	4T
Height	33-35	36-38	39-41
Weight	27-29	30-33	34-38
Waist	20	20½	21

Little Girl (Slim, Reg)							
Size	Small		Medium			Large	
	4S	4R	5S	5R	6S	6R	6XS 6XR
Height	39-41		42-44		45-47		47-49
Weight	32-34	34-38	35-39	39-44	40-45	45-49	46-48 49-53
Waist	19½	21½	20	22	20½	22½	21 23

Big Girl (Slim, Reg, Plus)																		
Size	Small						Medium						Large			X-Large		
	7S	7R	7+	8 S	8R	8+	10S	10R	10+	12S	12R	12+	14S	14R	14+	16S	16R	16+
Height	48-50			51-53			54-57			57-59			60-61			62-63		
Weight	44-50	50-56	56-64	51-56	57-64	64-73	64-73	73-84	84-96	81-92	92-106	106-122	98-108	108-125	125-146	109-119	119-135	135-155
Waist	21½	23	27½	22	23½	28	23	24½	29	24	25½	30	25	26½	31	26	27½	32

# women's SIZE CHART



Women's Tops																						
	xx-small		x-small		small		medium		large		x-large		1X		2X		3X		4X		5X	
Size	00	0	2	4	6	8	10	12	14	16	18	20	16W	18W	20W	22W	24W	26W	28W	30W	32W	34W
bust/chest	31	32	33	34	35	36	37	38	40	41	43	45	43	45	47	49	51	53	55	57	59	61
arm (petite)	27 ½	28	28 ¾	28	29 ½	29	29 ¾	30	30 ¾	31	31 ¾	31	--	--	--	--	--	--	--	--	--	--
arm (regular)	28 ¾	29	29 ¾	29	30 ½	30	30 ¾	31	31 ¾	32	32 ¾	32	--	--	--	--	--	--	--	--	--	--
arm (tall)	--	--	30 ¾	30	31 ½	31	31 ¾	32	32 ¾	33	33 ¾	33	--	--	--	--	--	--	--	--	--	--
arm (women's)	--	--	--	--	--	--	--	--	--	--	--	--	31	32 ½	32	32 ¾	33 ½	33 ¾	33 ¾	33 ¾	34 ½	34 ¾

Women's Bottoms																						
	xx-small		x-small		small		medium		large		x-large		1X		2X		3X		4X		5X	
Size	00	0	2	4	6	8	10	12	14	16	18	20	16W	18W	20W	22W	24W	26W	28W	30W	32W	34W
waist	24 to 25	25 to 26	26 to 27	27 to 28	28 to 29	29 to 30	30 to 31	31 to 32	33 to 34	34 to 36	36 to 38	39 to 41	37 to 38	39 to 40	41 to 42	43 to 44	45 to 46	47 to 48	49 to 50	51 to 52	53 to 54	55 to 56
hip/thigh	34	35	36	37	38	39	40	41	43	44	46	48	46	48	50	52	54	56	58	60	61	63

To measure accurately, keep the tape measure taut, but don't pull it tight. Get a friend to help, if possible. Measure over well-fitting undergarments.

**BUST/CHEST:** measure around fullest part of chest, keeping tape parallel to the floor.

**ARM:** with hand on hip, measure from center back at neck, across shoulder, elbow, down to wrist bone.

**WAIST:** bend to side; measure where body curves – even if you wear your pants lower.

**HIPS:** with feet shoulder width apart, measure fullest part of hip/thigh area.

**INSEAM:** measure inside leg seam of pants from crotch to hem.

## Women's Regular, Petite, Tall or 18W-26W?

**Regular:** hips slightly larger than bust.

**Petite:** shorter in the torso. Shorter sleeves and body, narrower shoulders.

**Tall:** long torsos. Body length up 1-1/2" and sleeve length up 1" from Regular.

**Women's 18W-26W:** proportioned for fuller figures. 18W is 2" larger in the bust, waist and hip than 18 regular. Arm girths are larger; shoulder widths narrower.



## boys' and men's guide to a GREAT UNIFORM FIT

### ORDER THE RIGHT SIZE, FIRST TRY.

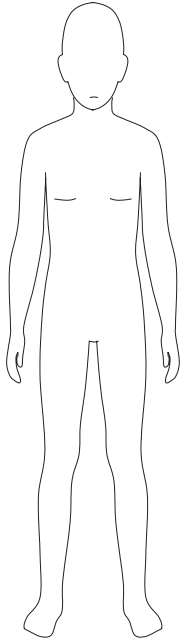
1. Kids grow fast, so measure your child every time you buy.
2. Remove bulky or heavy layers before measuring.
3. Begin with height, it's the best indicator to determine a child's size.
4. After height, a child's weight and/or waist measurement is the best gauge if your child needs an extended size (slim or plus).

### HOW DO I KNOW IF MY CHILD NEEDS AN EXTENDED SIZE?

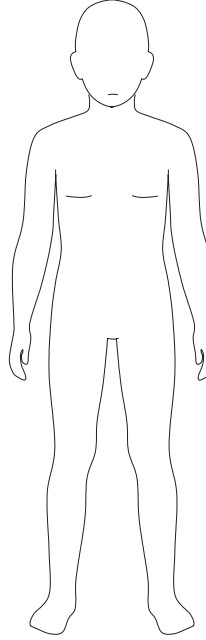
1. If you normally buy him a size 12 to fit his waist, but the inseam is always too long, he may need a 10 HUSKY (10H). Here's why: a 10H will give him extra room around his waist, yet has a shorter inseam, for a better overall fit in the waist and length.
2. If you normally buy him a size 12 to fit his waist, but the inseam is always too short, he may need a 14 Slim (14S). Here's why: a 14S is slimmer through the waist, yet has a longer inseam, for a better overall fit in waist and length.

LANDS' END SCHOOL

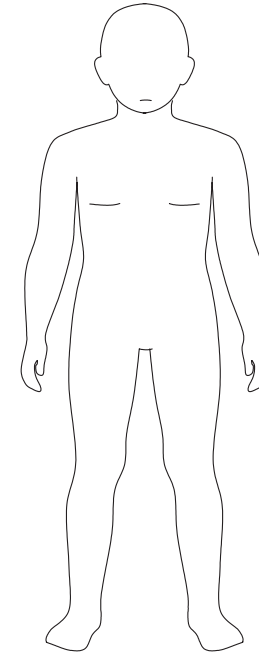
# boys' SIZE CHART



**SLIM (S)**  
Thin body and frame  
in relation to height



**REGULAR (R)**  
Average frame  
and proportions



**HUSKY (H)**  
Fuller body in proportion  
to height

**REMEMBER!** Start with height.

**HEIGHT:** Child should stand in stocking feet, with feet shoulder width apart, back to a wall. Measure from the floor to the crown of head.

**WAIST:** Measure at natural waistline. Have the child bend to one side. Where the body curves is the natural waistline.

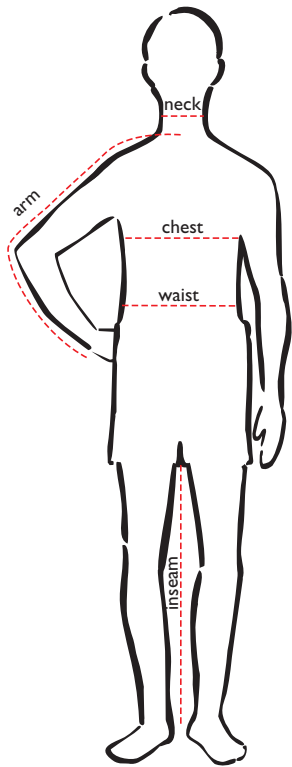
Toddler			
Size	2T	3T	4T
Height	33-35	36-38	39-41
Weight	27-29	30-33	34-38
Waist	20	20½	21

Little Boy (Slim, Reg)								
Size	Small		Medium			Large		
	4S	4R	5S	5R	6S	6R	7S	7R
Height	39-41		42-44		45-47		48-50	
Weight	32-34	34-38	35-39	39-44	40-45	45-49	49-50	50-56
Waist	19½	21½	20	22	20½	22½	21	23

Big Boy (Slim, Reg, Husky)										
Size	Small			Medium						
	8S	8R	8H	10S	10R	10H	12S	12R	12H	
Height	51-53			54-57			58-61			
Weight	52-56	56-64	64-72	62-70	70-80	80-92	78-90	90-102	102-118	
Waist	21½	23½	26½	22½	24½	27½	23½	25½	28½	

Big Boy (Slim, Reg, Husky)												
Size	Large						X-Large					
	14S	14R	14H	16S	16R	16H	18S	18R	18H	20S	20R	20H
Height	62-63			64-65			66-67			68-70		
Weight	95-102	112-128	128-146	120-134	134-152	152-162	134-148	148-166	164-172	140-156	156-174	174-196
Waist	24½	26½	29½	26	28	31	27	29	32	28	30	33

# men's SIZE CHART



Men's																		
	small		medium		large		x-large		xx-large		2XL		3XL		4XL		5XL	
neck	14	14	15	15	16	16	17	17	18	18	18	18	19	19	20	20	21	21
chest	34	36	38	40	42	44	46	48	50	52	50	52	54	56	58	60	62	64
arm (regular)	32	33	33	34	34	35	35	36	36	36	35	35	36	36	37	37	38	38
arm (tall)	34	34	35	35	36	36	37	37	38	38	36	37	37	38	38	39	39	40
waist (regular)	28	30	32	34	36	38	40	42	44	46	48	48	50	52	54	56	58	60
hips	34	36	38	40	42	44	45	47	48	50	51		53	54	55	55	56	56

To measure accurately, keep the tape measure taut, but don't pull it tight. Get a friend to help, if possible. Measure over well-fitting undergarments.

**CHEST:** measure around fullest part of chest, keeping tape parallel to the floor.

**ARM:** with hand on hip, measure from center back at neck, across shoulder, elbow, down to wrist bone.

**WAIST:** bend to side; measure where body curves – even if you wear your pants lower.

**HIPS:** with feet shoulder width apart, measure fullest part of hip/thigh area.

**INSEAM:** measure inside leg seam of pants from crotch to hem.

## Men's Regular, Tall or Big?

**Regular:** hips and chest of equal girth.

**Tall (or Long):** long torso. Body of shirts is 1-1/2" to 2" longer than Regular. Coat sleeve and body length is 1-1/2" longer.

**Big:** average torso length, just larger overall. Pockets and other details increase in size for a pleasing proportion.